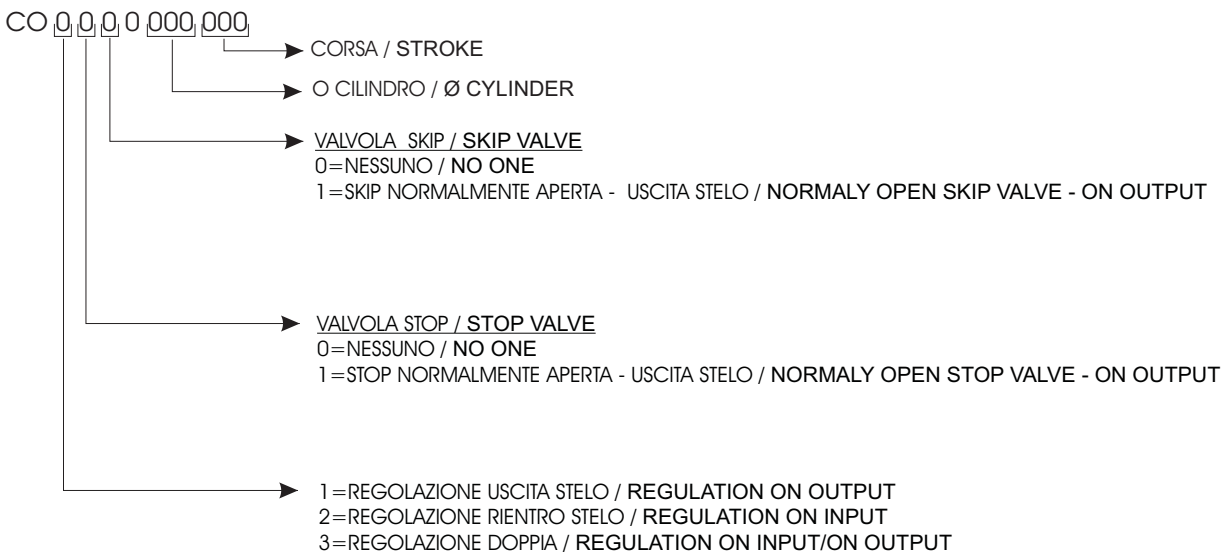


E' un cilindro ad alimentazione pneumatica ma con un sistema di controllo della velocità a circuito chiuso di olio ricavato all'interno dello stelo.
Si possono ottenere regolazioni di precisione in entrambe le direzioni, e con l'aggiunta delle valvole ski e stop è possibile ottenere l'accelerazione e lo stop in qualsiasi posizione.

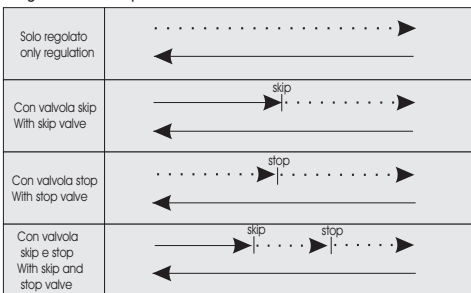
It is a cylinder with pneumatic feeding but with a system of control of the speed to closed circuit of oil, result inside the rod.

It is possible to get regulations of precision in both the directions, and with the addition of the valves skip and stop it is possible to get the acceleration and the stop in every position.

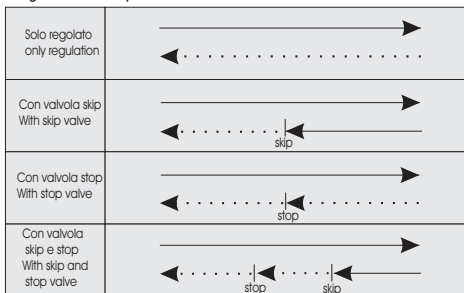
CHIAVE DI CODIFICA / KEY TO TYPE NUMBER



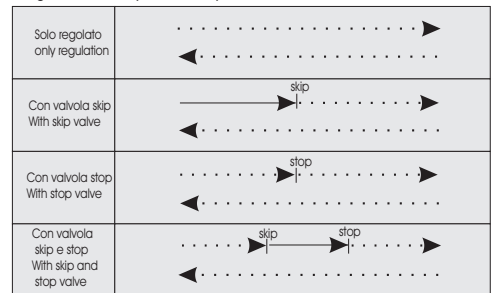
Regolazione uscita stelo
Regulation on output



Regolazione rientro stelo
Regulation on input



Regolazione uscita e rientro stelo
Regulation on input / on output



.....> = velocità regolata / regulation speed
← = Velocità normale / standard speed

DATI TECNICI / TECHNICAL INFORMATION

Fluido / fluid	Aria filtrata e lubrificata / Filtered and lubricated air
Fluido di controllo / Control fluid	Olio idraulico / Hydraulic oil
Pressione di esercizio / Operating pressure	1 - 10 bar
Temperatura di esercizio / Operating temperature	-10° +80°
Velocità / Speed	70 - 6000 mm/min
Fissaggi / Fixing	Interassi fori fissaggio a norme ISO / Hole interaxis standard ISO
Alesaggi / Size	50 - 63 mm
Corse standard / Standard stroke	50 - 100 - 150 - 200 - 250 - 300 - 350 - 400 - 450 - 500

Forza in N / Force in N

Taglia (mm) Size (mm)	Ø stelo rod (mm)	superficie utile Working surface	Pressione di lavoro									
			1	2	3	4	5	6	7	8	9	10
50	25	spinta / pushing 18.5 cm ²	181	362	544	725	906	1088	1269	1450	1632	1813
		trazione / traction 14.7 cm ²	144	288	433	577	721	865	1010	1154	1298	1443
63	35	spinta / pushing 30.0 cm ²	294	588	883	1177	1472	1766	2060	2355	2649	2944
		Trazione / traction 21.6 cm ²	211	422	633	844	1056	1267	1478	1689	1900	2112

TABELLA DELLE FORZE IN N
FORCE TABLE IN N

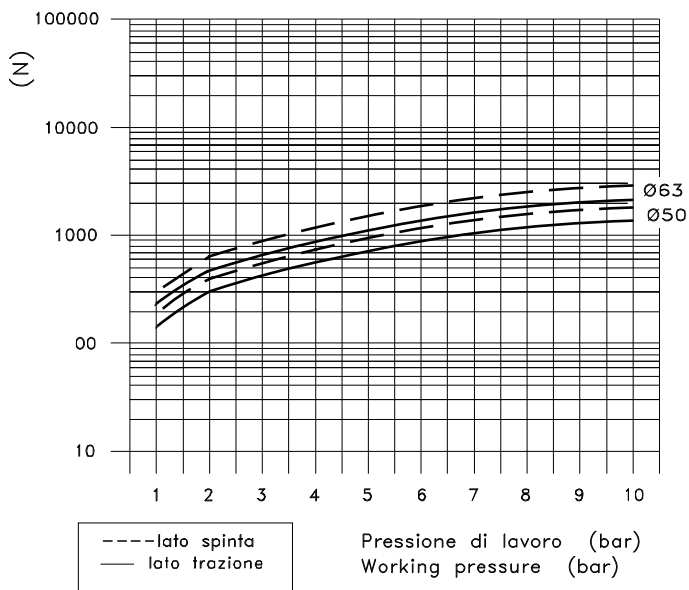
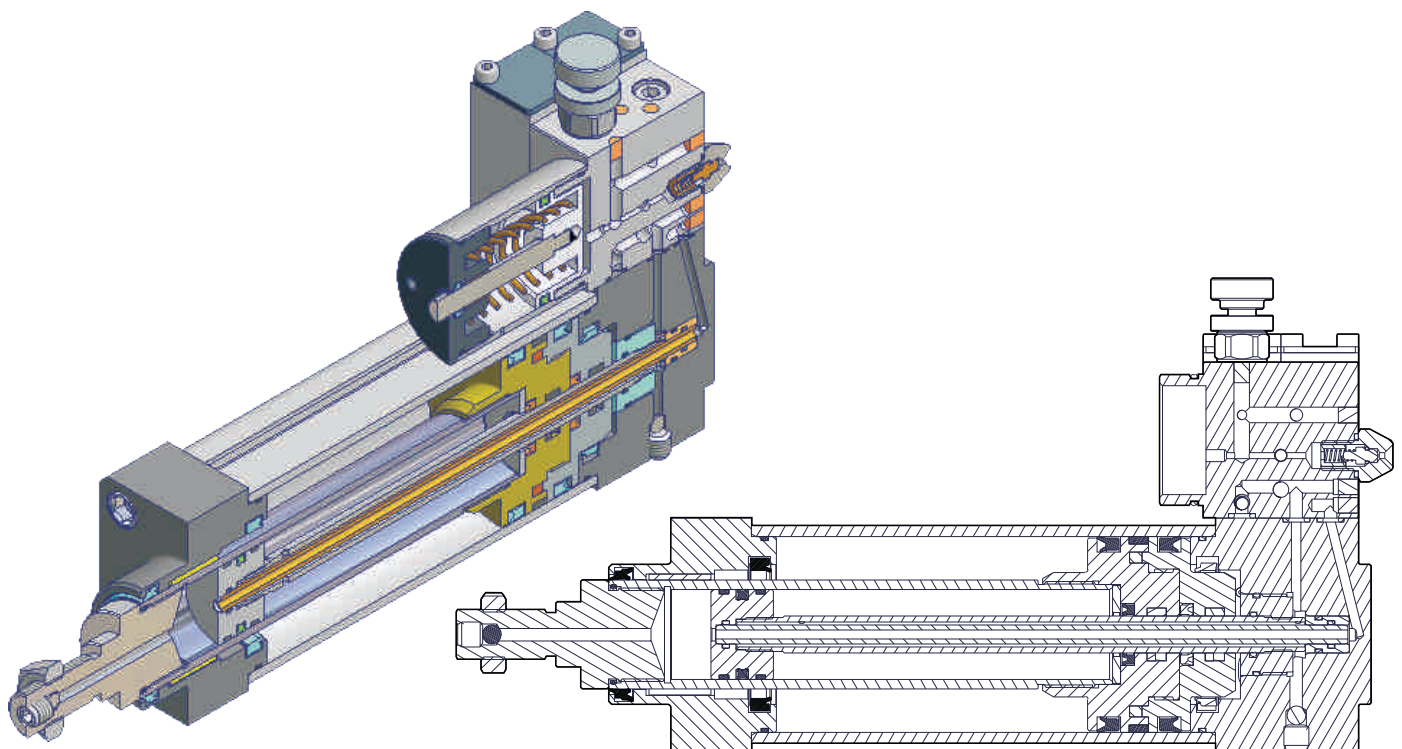
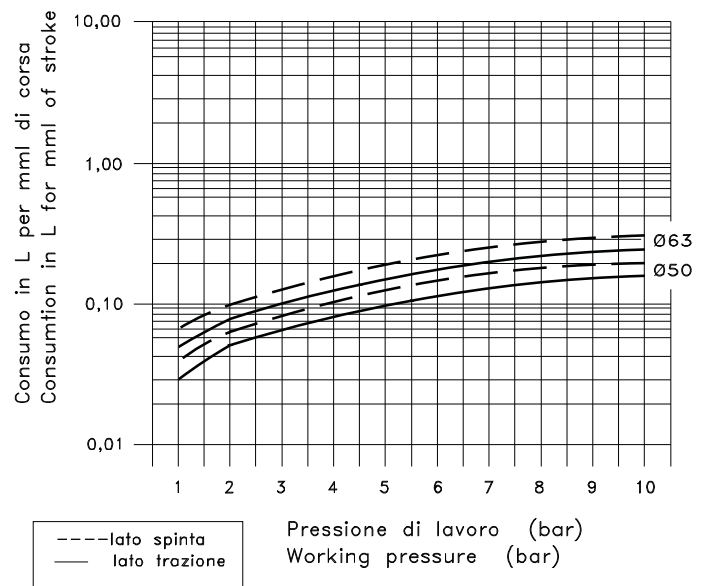
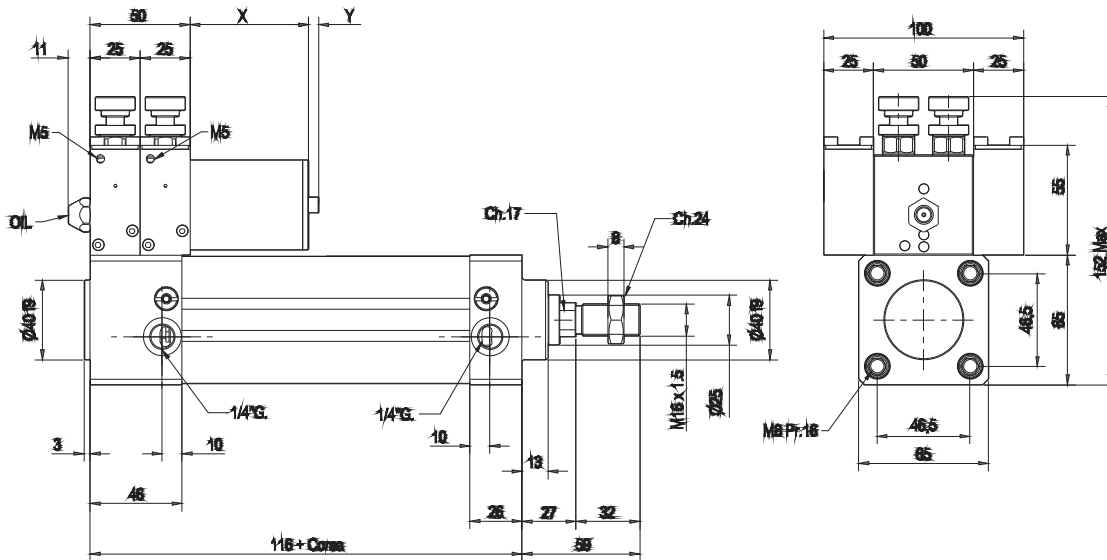


TABELLA DEI CONSUMI IN NL (per 1 cm. di corsa)
CYLINDER CONSUMPTION TABLE IN NL (1 cm. of stroke)

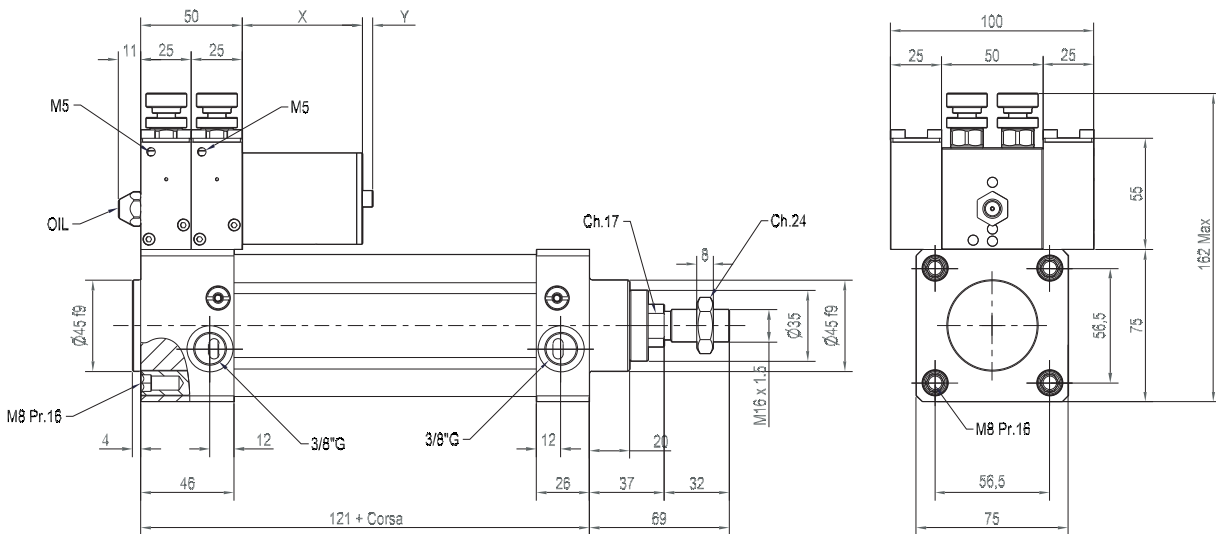


Ø 50



Corse	X	Y max
0+199	84	39
200+399	156	84

Ø 63



Corse	X	Y max
0+199	84	39
200+399	156	84

