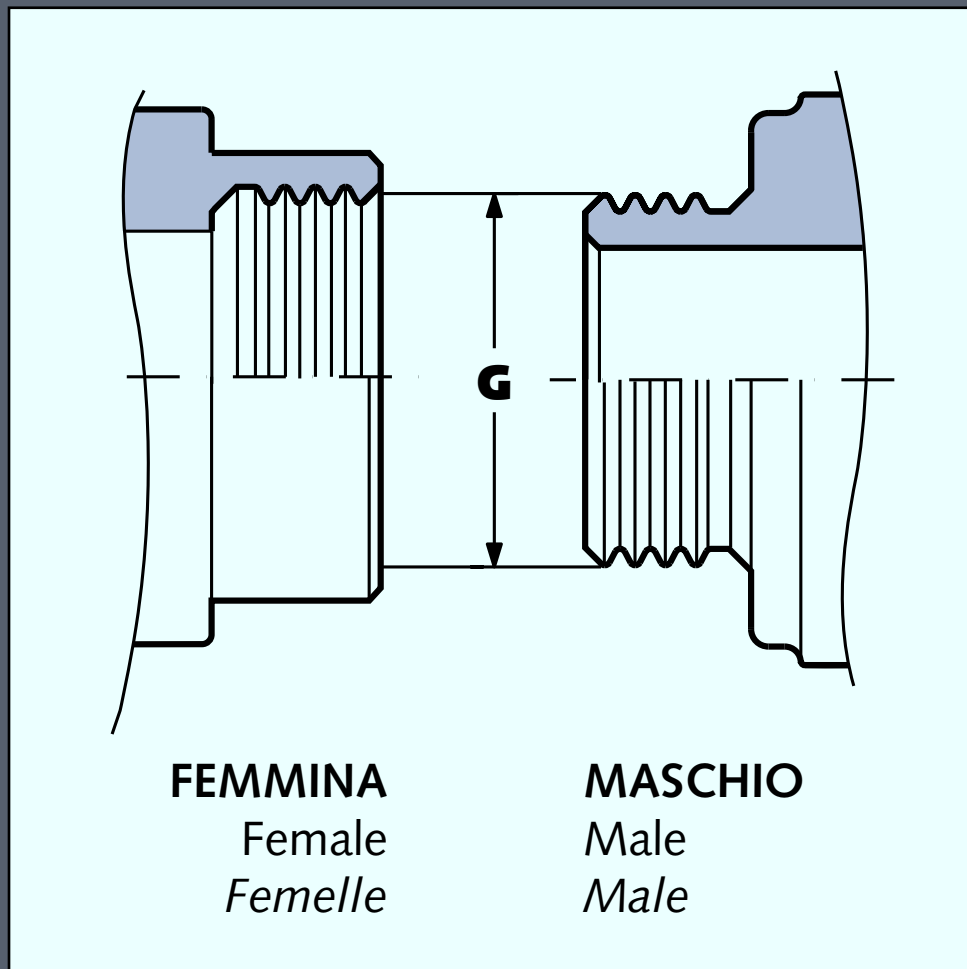


# GAS UNI-ISO 228



**G**

<b>mm</b>	<b>inch</b>
9,728	1/8
13,157	1/4
16,662	3/8
20,955	1/2
26,441	3/4
33,249	1
41,910	1 1/4
47,803	1 1/2
59,614	2
75,184	2 1/2
87,884	3
113,04	4
138,43	5

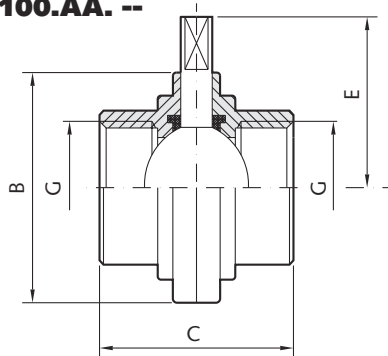
# VALVOLE A FARFALLA (senza maniglia)

Butterfly valves (without handle) • *Vannes à papillon (sans poignée)*

## VALVOLA A FARFALLA CON ATTACCHI GAS FEMMINA-FEMMINA

Butterfly valve FEMALE-FEMALE GAS ends • *Vanne à papillon avec attelages GAS FEMELLE-FEMELLE*

### 1.100.AA. --

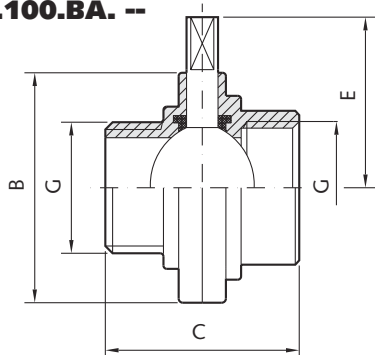


	G	B	C	E	
	inch	mm	mm	mm	kg
<b>1.100.AA.13-A</b>	1	79	68	58	1,00
<b>1.100.AA.29-A</b>	1 1/4	85	76	63	1,25
<b>1.100.AA.38-A</b>	1 1/2	92	76	65	1,45
<b>1.100.AA.50-A</b>	2	105	80	71	1,90
<b>1.100.AA.65-A</b>	2 1/2	125	82	81	2,20
<b>1.100.AA.71-A</b>	3	137	84	88	3,10
<b>1.100.AA.80-A</b>	4	157	88	100	4,00

## VALVOLA A FARFALLA CON ATTACCHI GAS MASCHIO-FEMMINA

Butterfly valve MALE-FEMALE GAS ends • *Vanne à papillon avec attelages GAS MALE-FEMELLE*

### 1.100.BA. --

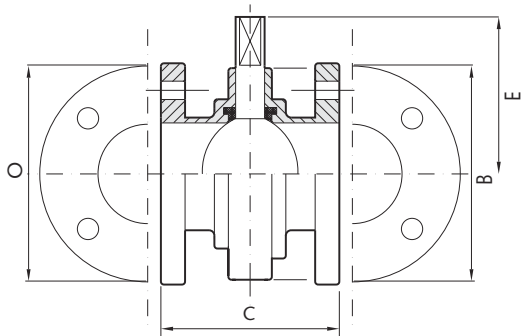


	G	B	C	E	
	inch	mm	mm	mm	kg
<b>1.100.BA.13-A</b>	1	79	68	58	0,95
<b>1.100.BA.29-A</b>	1 1/4	85	76	63	1,20
<b>1.100.BA.38-A</b>	1 1/2	92	76	65	1,40
<b>1.100.BA.50-A</b>	2	105	80	71	1,80
<b>1.100.BA.65-A</b>	2 1/2	125	82	81	2,10
<b>1.100.BA.71-A</b>	3	137	84	88	2,95
<b>1.100.BA.80-A</b>	4	157	88	100	3,75

## VALVOLA A FARFALLA CON ATTACCHI FLANGIA PN 6-FLANGIA PN 6 (UNI 2276)

Butterfly valve PN6 FLANGE ends • *Vanne à papillon avec attelages BRIDE ronde PN6*

### 1.100.XX. --

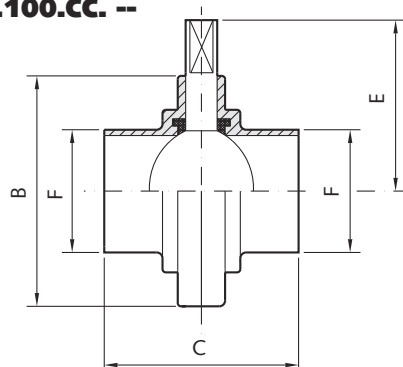


	DN	G	O	B	C	E	
	mm	inch	mm	mm	mm	mm	kg
<b>1.100.XX.13-A</b>	25	1	100	85	76	63	1,60
<b>1.100.XX.29-A</b>	32	1 1/4	120	92	76	65	2,00
<b>1.100.XX.38-A</b>	40	1 1/2	130	92	88	65	2,80
<b>1.100.XX.50-A</b>	50	2	140	105	98	71	3,40
<b>1.100.XX.65-A</b>	65	2 1/2	160	125	102	81	4,35
<b>1.100.XX.71-A</b>	80	3	190	137	104	88	6,30
<b>1.100.XX.80-A</b>	100	4	210	157	108	100	7,70

## VALVOLA A FARFALLA CON ATTACCHI SALDARE-SALDARE

Butterfly valve WELDING-WELDING ends • *Vanne à papillon avec attelages SOUDER-SOUDER*

### 1.100.CC. --



	F	B	C	E	
	mm	mm	mm	mm	kg
<b>1.100.CC.13-A</b>	33,7	85	76	63	0,77
<b>1.100.CC.29-A</b>	42,4	92	76	65	0,85
<b>1.100.CC.38-A</b>	48,3	92	76	65	1,00
<b>1.100.CC.56-A</b>	60,3	113	82	76	1,45
<b>1.100.CC.65-A</b>	76,1	125	82	81	1,75
<b>1.100.CC.71-A</b>	88,9	137	84	88	2,30
<b>1.100.CC.80-A</b>	114,3	157	88	100	2,70

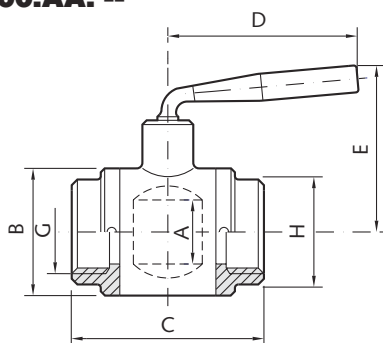
# VALVOLE A SFERA A DUE VIE "CLASSIC"

"CLASSIC" Two ways ball valves • Vannes à boule à deux voies "CLASSIC"

## VALVOLA A SFERA "CLASSIC" CON ATTACCHI GAS FEMMINA-FEMMINA

"CLASSIC" ball valve FEMALE-FEMALE GAS ends • Vanne à boule "CLASSIC" avec attelages GAS FEMELLE-FEMELLE

### 2.100.AA. --

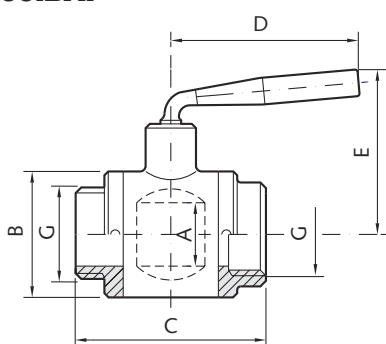


	G	A	B	C	D	E	
	inch	mm	mm	mm	mm	mm	kg
2.100.AA.04-A	1/4	10	28	60	75	58	0,30
2.100.AA.05-A	3/8	12	28	60	75	58	0,30
2.100.AA.08-A	1/2	15	35	65	82	67	0,40
2.100.AA.10-A	3/4	20	40	65	82	70	0,55
2.100.AA.13-A	1	25	50	90	98	75	1,00
2.100.AA.29-A	1 1/4	36	62	96	120	101	1,70
2.100.AA.38-A	1 1/2	40	70	100	120	110	2,20
2.100.AA.50-A	2	50	90	129	153	125	3,80
2.100.AA.65-A	2 1/2	66	114	165	190	158	7,00
2.100.AA.71-A	3	76	133	172	248	193	10,00
2.100.AA.80-A	4	98,5	160	189	248	230	14,00

## VALVOLA A SFERA "CLASSIC" CON ATTACCHI GAS MASCHIO-FEMMINA

"CLASSIC" ball valve MALE-FEMALE GAS ends • Vanne à boule "CLASSIC" avec attelages GAS MALE-FEMELLE

### 2.100.BA. --

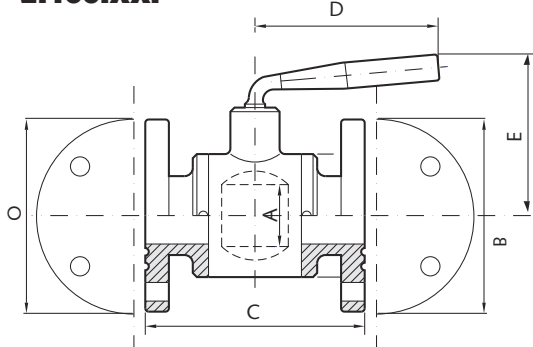


	G	A	B	C	D	E	
	inch	mm	mm	mm	mm	mm	kg
2.100.BA.04-A	1/4	10	28	62	75	58	0,30
2.100.BA.05-A	3/8	10	28	62	75	58	0,30
2.100.BA.08-A	1/2	15	35	70	82	67	0,40
2.100.BA.10-A	3/4	20	40	65	82	70	0,55
2.100.BA.13-A	1	25	50	80	98	75	1,00
2.100.BA.29-A	1 1/4	36	62	100	120	101	1,70
2.100.BA.38-A	1 1/2	40	70	100	120	110	2,20
2.100.BA.50-A	2	50	90	131	153	126	3,80
2.100.BA.65-A	2 1/2	66	114	165	190	158	7,00
2.100.BA.71-A	3	76	133	178	248	193	10,00
2.100.BA.80-A	4	98,5	160	193	248	230	14,00

## VALVOLA A SFERA "CLASSIC" CON ATTACCHI FLANGIA PN 6-FLANGIA PN 6 (UNI 2276)

"CLASSIC" ball valve PN6 FLANGE ends • Vanne à boule "CLASSIC" avec attelages BRIDE À BRIDE PN6

### 2.100.XX. --

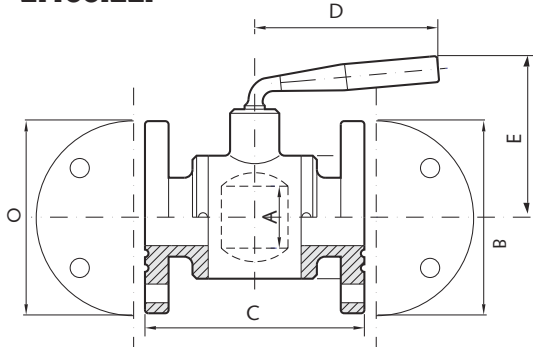


	DN	G	O	A	B	C	D	E	
	mm	inch	mm	mm	mm	mm	mm	mm	kg
2.100.XX.08-A	15	1/2	80	15	35	80	82	67	1,00
2.100.XX.10-A	20	3/4	90	20	40	85	82	70	1,25
2.100.XX.13-A	25	1	100	25	50	100	98	75	1,60
2.100.XX.29-A	32	1 1/4	120	36	62	128	120	101	2,70
2.100.XX.38-A	40	1 1/2	130	40	70	125	120	111	4,00
2.100.XX.50-A	50	2	140	50	90	149	153	125	4,90
2.100.XX.65-A	65	2 1/2	160	66	114	187	190	158	9,00
2.100.XX.71-A	80	3	190	76	133	210	248	193	13,50
2.100.XX.80-A	100	4	210	98,5	160	223	248	230	18,50

## VALVOLA A SFERA "CLASSIC" CON ATTACCHI FLANGIA PN 16-FLANGIA PN 16 (UNI 2278)

"CLASSIC" ball valve PN 16 FLANGE ends • Vanne à boule "CLASSIC" avec attelages BRIDE À BRIDE PN 16

### 2.100.ZZ. --



	DN	G	O	A	B	C	D	E	
	mm	inch	mm	mm	mm	mm	mm	mm	kg
2.100.ZZ.08-A	15	1/2	95	15	35	84	82	67	1,20
2.100.ZZ.10-A	20	3/4	105	20	40	84	82	70	1,50
2.100.ZZ.13-A	25	1	115	25	50	100	98	75	1,90
2.100.ZZ.29-A	32	1 1/4	140	36	62	116	120	101	3,10
2.100.ZZ.38-A	40	1 1/2	150	40	70	125	120	110	4,50
2.100.ZZ.56-A	50	2	165	50	90	149	153	125	5,60
2.100.ZZ.65-A	65	2 1/2	185	66	114	187	190	158	10,40
2.100.ZZ.71-A	80	3	200	76	133	202	248	193	14,00
2.100.ZZ.80-A	100	4	220	98,5	160	224	248	230	19,00

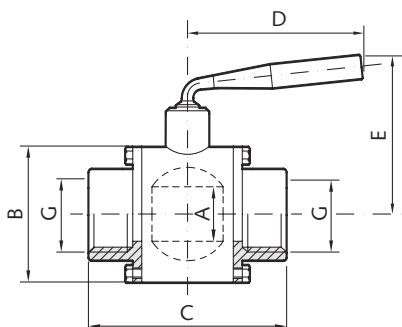
# VALVOLE A SFERA A DUE VIE "STAR"

"STAR" two ways ball valves • Vannes à boule à deux voies "STAR"

## VALVOLA A SFERA "STAR" CON ATTACCHI GAS FEMMINA-FEMMINA

"STAR" ball valve FEMALE-FEMALE GAS ends • Vanne à boule "STAR" avec attelages FEMELLE-FEMELLE GAS

### 2.200.AA. --

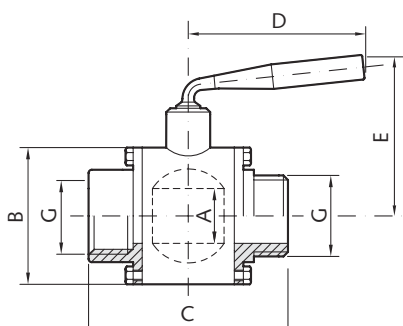


	G	A	B	C	D	E	
	inch	mm	mm	mm	mm	mm	kg
2.200.AA.13-A	1	25	57	65	98	75	1,10
2.200.AA.29-A	1 1/4	36	75	91	120	101	1,60
2.200.AA.38-A	1 1/2	45	91	104	153	120	3,10
2.200.AA.50-A	2	50	103	121	153	125	4,20
2.200.AA.65-A	2 1/2	66	126	147	190	158	6,70
2.200.AA.71-A	3	76	143	162	248	193	9,80
2.200.AA.80-A	4	98	172	185	248	230	14,10
2.200.AA.82-A	5	120	205	210	248	250	15,50

## VALVOLA A SFERA "STAR" CON ATTACCHI GAS MASCHIO-FEMMINA

"STAR" ball valve MALE-FEMALE GAS ends • Vanne à boule "STAR" avec attelages MALE-FEMELLE GAS

### 2.200.BA. --

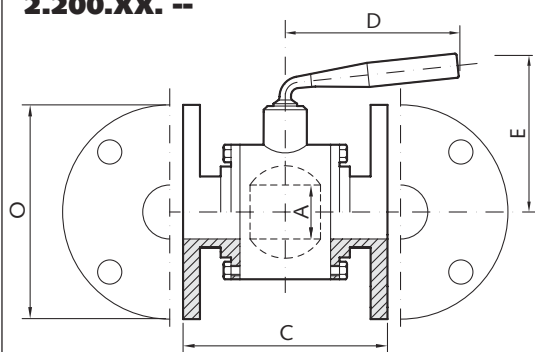


	G	A	B	C	D	E	
	inch	mm	mm	mm	mm	mm	kg
2.200.BA.13-A	1	25	57	67	98	75	1,10
2.200.BA.29-A	1 1/4	36	75	93	120	101	1,60
2.200.BA.38-A	1 1/2	45	91	106	153	120	3,10
2.200.BA.50-A	2	50	103	121	153	125	4,20
2.200.BA.65-A	2 1/2	66	126	147	190	158	6,70
2.200.BA.71-A	3	76	143	162	248	193	9,80
2.200.BA.80-A	4	98,5	172	185	248	230	14,10
2.200.BA.82-A	5	120	205	210	248	250	15,50

## VALVOLA A SFERA "STAR" CON ATTACCHI FLANGIA PN6 - FLANGIA PN6 (2276)

"STAR" ball valve PN6 FLANGE ends • Vanne à boule "STAR" avec attelages BRIDE ronde PN6

### 2.200.XX. --

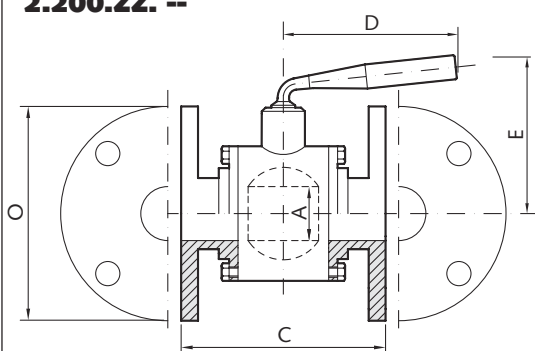


	DN	G	O	A	B	C	D	E	
	mm	inch	mm	mm	mm	mm	mm	mm	kg
2.200.XX.13-A	25	1	100	25	57	89	98	75	1,90
2.200.XX.29-A	32	1 1/4	120	36	75	119	120	101	2,80
2.200.XX.38-A	40	1 1/2	130	45	91	132	153	120	4,40
2.200.XX.50-A	50	2	140	50	103	121	153	125	5,80
2.200.XX.65-A	65	2 1/2	160	66	126	163	190	158	9,30
2.200.XX.71-A	80	3	190	76	143	182	248	193	13,70
2.200.XX.80-A	100	4	210	98,5	172	205	248	230	18,60
2.200.XX.82-A	125	5	240	120	205	230	248	250	22,00

## VALVOLA A SFERA "STAR" CON ATTACCHI FLANGIA PN16 - FLANGIA PN16 (uni 2278)

"STAR" ball valve PN 16 FLANGE ends • Vanne à boule "STAR" avec attelages BRIDE ronde PN 16

### 2.200.ZZ. --



	DN	G	O	A	B	C	D	E	
	mm	inch	mm	mm	mm	mm	mm	mm	kg
2.200.ZZ.13-A	25	1	115	25	57	85	98	75	2,20
2.200.ZZ.29-A	32	1 1/4	140	36	75	106	120	101	3,20
2.200.ZZ.38-A	40	1 1/2	150	45	91	124	153	120	4,90
2.200.ZZ.50-A	50	2	165	50	103	137	153	125	6,50
2.200.ZZ.65-A	65	2 1/2	185	66	126	167	190	158	10,70
2.200.ZZ.71-A	80	3	200	76	143	182	248	193	14,20
2.200.ZZ.80-A	100	4	220	98,5	172	205	248	230	19,00
2.200.ZZ.82-A	125	5	250	120	205	234	248	250	23,80

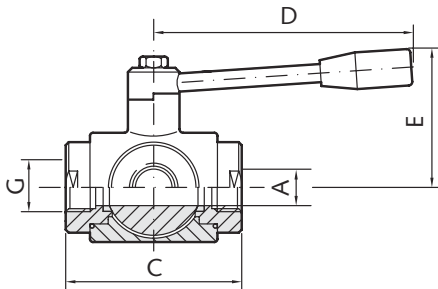
# VALVOLE A SFERA A TRE VIE

Tri ways ball valves • Vannes à boule à trois voies

## VALVOLA A SFERA "L" A TRE VIE CON ATTACCHI GAS FEMMINA

Three ways "L" ball valve FEMALE GAS ends • Vanne à boule "L" à trois voies avec attelages GAS FEMELLE

### 2.320.AA. --

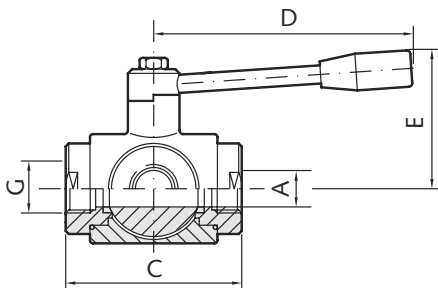


	G inch	A mm	PN bar	C mm	D mm	E mm	kg
2.320.AA.04-C	1/4	12	40	72	110	60	5910,94
2.320.AA.05-C	3/8	12	40	72	110	60	5910,93
2.320.AA.08-C	1/2	15	40	82	110	65	5911,20
2.320.AA.10-C	3/4	20	40	92	160	70	5911,90
2.320.AA.13-C	1	25	40	102	160	80	5912,50
2.320.AA.29-C	1 1/4	32	40	118	190	95	5914,50
2.320.AA.38-C	1 1/2	40	40	134	190	110	5916,80
2.320.AA.50-C	2	50	25	144	235	120	5918,20
2.320.AA.65-C	2 1/2	65	25	160	285	130	10,15
2.320.AA.71-C	3	80	16	200	310	145	20,90
2.320.AA.80-C	4	100	16	240	310	160	33,80
2.320.AA.82-C	5	120	6	300	350	180	45,00
2.321.AA.65-C	2 1/2	65	4	160	285	130	5918,90
2.321.AA.71-C	3	80	4	200	310	145	17,30
2.321.AA.80-C	4	100	4	240	310	160	27,20

## VALVOLA A SFERA "T" A TRE VIE CON ATTACCHI GAS FEMMINA

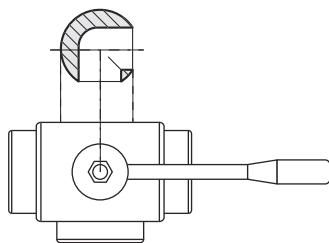
Three ways "T" ball valve FEMALE GAS ends • Vanne à boule "T" trois voies avec attelages GAS FEMELLE

### 2.330.AA. --

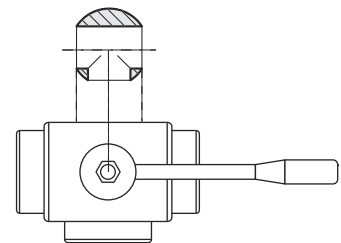


	G inch	A mm	PN bar	C mm	D mm	E mm	kg
2.330.AA.04-C	1/4	12	40	72	110	60	5910,94
2.330.AA.05-C	3/8	12	40	72	110	60	5910,93
2.330.AA.08-C	1/2	15	40	82	110	65	5911,20
2.330.AA.10-C	3/4	20	40	92	160	70	5911,90
2.330.AA.13-C	1	25	40	102	160	80	5912,50
2.330.AA.29-C	1 1/4	32	40	118	190	95	5914,50
2.330.AA.38-C	1 1/2	40	40	134	190	110	5916,80
2.330.AA.50-C	2	50	25	144	235	120	5918,20
2.330.AA.65-C	2 1/2	65	25	160	285	130	10,15
2.330.AA.71-C	3	80	16	200	310	145	20,90
2.330.AA.80-C	4	100	16	240	310	160	33,80
2.330.AA.82-C	5	120	6	300	350	180	45,00
2.331.AA.65-C	2 1/2	65	4	160	285	130	5918,90
2.331.AA.71-C	3	80	4	200	310	145	17,30
2.331.AA.80-C	4	100	4	240	310	160	27,20

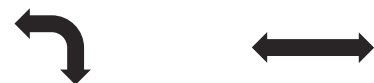
SFERA "L"



SFERA "T"



1



2



3



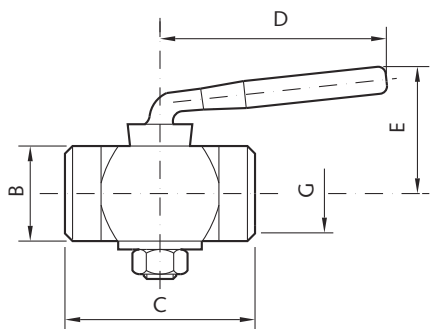
4



**RUBINETTO A MASCHIO CONICO CON ATTACCHI GAS FEMMINA-FEMMINA**

Conical plug cock FEMALE-FEMALE GAS ends • *Robinet à boisseau conic avec attelages GAS FEMELLE-FEMELLE*

**3.070.AA. --**

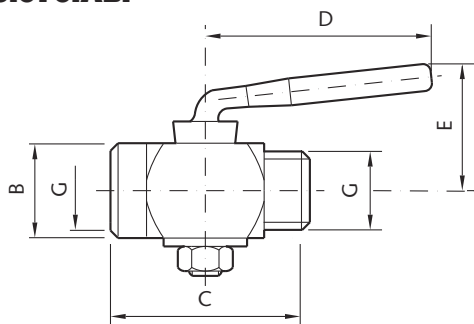


	G	B	C	D	E	
	inch	mm	mm	mm	mm	kg
<b>3.070.AA.01-A</b>	1/8	22	45	64	45	0,15
<b>3.070.AA.04-A</b>	1/4	22	50	64	45	0,15
<b>3.070.AA.05-A</b>	3/8	22	50	64	45	0,16
<b>3.070.AA.08-A</b>	1/2	25	50	64	50	0,30

**RUBINETTO A MASCHIO CONICO CON ATTACCHI GAS FEMMINA-MASCHIO**

Conical plug cock FEMALE-MALE GAS ends • *Robinet à boisseau conic avec attelages GAS FEMELLE-MALE*

**3.070.AB. --**

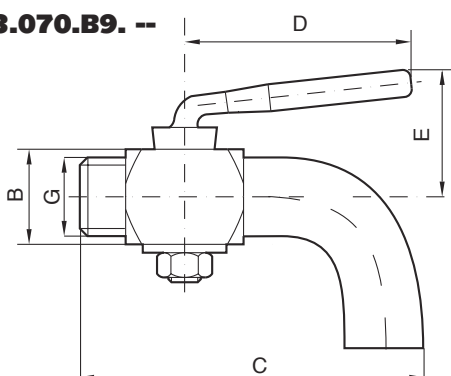


	G	B	C	D	E	
	inch	mm	mm	mm	mm	kg
<b>3.070.AB.01-A</b>	1/8	22	45	64	45	0,15
<b>3.070.AB.04-A</b>	1/4	22	50	64	45	0,15
<b>3.070.AB.05-A</b>	3/8	22	50	64	45	0,16
<b>3.070.AB.08-A</b>	1/2	25	55	64	50	0,30

**RUBINETTO A MASCHIO CONICO CON ATTACCHI GAS MASCHIO USCITA CON CURVA**

Sample cock BEND-MALE GAS ends • *Robinet à boisseau conic avec GAS MALE-COUDE 90°*

**3.070.B9. --**

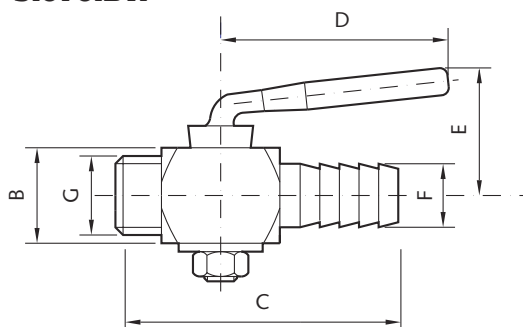


	G	C	B	D	E	
	inch	mm	mm	mm	mm	kg
<b>3.070.B9.01-A</b>	1/8	50	22	64	45	0,22
<b>3.070.B9.04-A</b>	1/4	56	22	64	45	0,22
<b>3.070.B9.05-A</b>	3/8	62	22	64	45	0,25
<b>3.070.B9.08-A</b>	1/2	76	25	64	50	0,40

**RUBINETTO A MASCHIO CONICO CON ATTACCHI GAS MASCHIO-PORTAGOMMA**

Conical plug cock MALE GAS-HOSE ends • *Robinet a boisseau conic avec attelages GAS MALE-nez à LIGATURER*

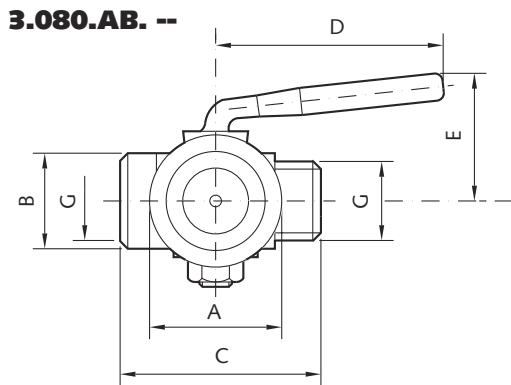
**3.070.BV. --**



	G	F	B	C	D	E	
	inch	mm	mm	mm	mm	mm	kg
<b>3.070.BV.01-A</b>	1/8	12	22	50	64	45	0,16
<b>3.070.BV.04-A</b>	1/4	12	22	56	64	45	0,16
<b>3.070.BV.05-A</b>	3/8	16	22	62	64	45	0,18
<b>3.070.BV.08-A</b>	1/2	17	25	80	64	50	0,30

**RUBINETTO PORTA-MANOMETRO CON ATTACCHI GAS FEMMINA-MASCHIO**

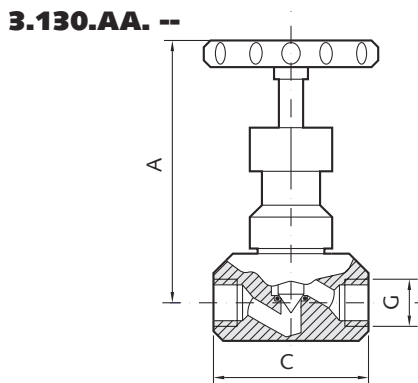
NCC cock FEMALE-MALE GAS ends • *Robinet NCC avec attelages GAS FEMELLE-MALE*



	G	A	B	C	D	E	kg
	inch	mm	mm	mm	mm	mm	
<b>3.080.AB.05-A</b>	3/8	40	22	50	64	45	0,25
<b>3.080.AB.08-A</b>	1/2	40	25	55	64	50	0,40

**RUBINETTO A SPILLO CON ATTACCHI GAS FEMMINA-FEMMINA**

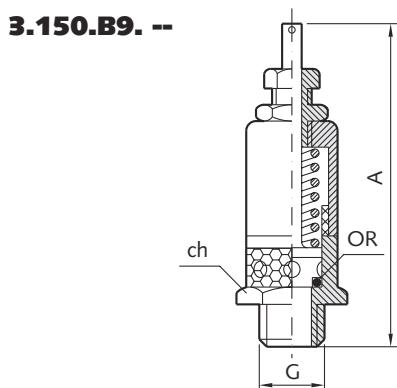
Pin cock FEMALE-FEMALE GAS ends • *Robinet a aiguille avec attelages GAS FEMELLE-FEMELLE*



	G	A	C	kg
	inch	mm	mm	
<b>3.130.AA.04-B</b>	1/4	76	45	0,50
<b>3.130.AA.05-B</b>	3/8	80	53	0,55
<b>3.130.AA.08-B</b>	1/2	100	60	0,60
<b>3.130.AA.10-B</b>	3/4	103	70	0,70
<b>3.130.AA.13-B</b>	1	110	80	0,75

**VALVOLA DI SICUREZZA A MOLLA A SEMPLICE EFFETTO CON ATTACCO GAS MASCHIO**

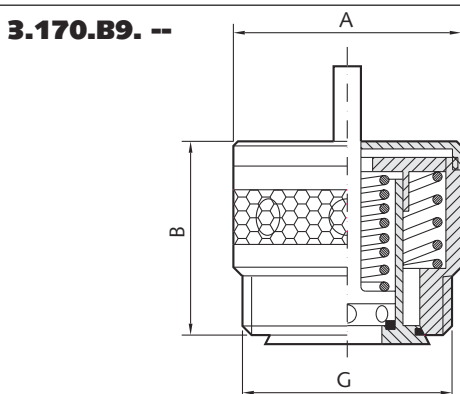
Spring safety valve MALE GAS one acting ends • *Soupape de decharge simple effet avec attelage GAS MALE*



	G	A	ch	kg
	inch	mm	mm	
<b>3.150.B9.08-A</b>	1/2	95/110	30	0,30

**VALVOLA DI SICUREZZA A DOPPIO EFFETTO con attacco GAS MASCHIO**

Double ACTING safety valve MALE GAS end • *Vanne de decharge a double effet avec attelages GAS MALE*



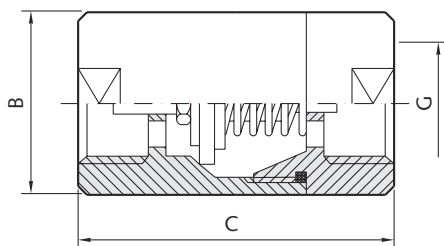
	A	B	G	kg
	mm	mm	inch	
<b>3.170.B9.38-A</b>	50	42	1"1/2	0,65



**VALVOLA DI RITEGNO CON ATTACCHI GAS FEMMINA-FEMMINA**

Non return valve FEMALE-FEMALE GAS ends • Clapet anti retour avec attelages GAS FEMELLE-FEMELLE

**3.200.AA. --**

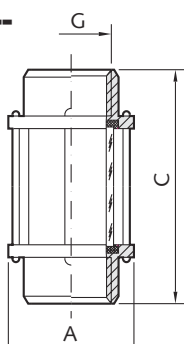


	G inch	B mm	C mm	kg
<b>3.200.AA.04-B</b>	1/4	25	60	0,15
<b>3.200.AA.05-B</b>	3/8	28	65	0,20
<b>3.200.AA.08-B</b>	1/2	35	80	0,39
<b>3.200.AA.10-B</b>	3/4	42	80	0,70
<b>3.200.AA.13-B</b>	1	52	90	0,90
<b>3.200.AA.29-B</b>	1 1/4	55	95	1,00
<b>3.200.AA.38-B</b>	1 1/2	65	110	1,50
<b>3.200.AA.50-B</b>	2	80	118	2,00

**SPECOLA DI LINEA CON ATTACCHI GAS FEMMINA-FEMMINA**

In line sight glass FEMALE-FEMALE GAS ends • Mireur avec attelages GAS FEMELLE-FEMELLE

**3.240.AA. --**

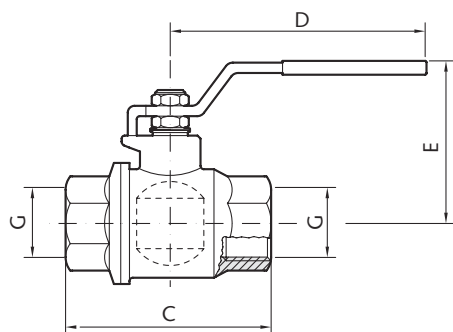


	G inch	A mm	C mm	kg
<b>3.240.AA.10-A</b>	3/4	60	157	0,60
<b>3.240.AA.13-A</b>	1	60	157	0,70
<b>3.240.AA.29-A</b>	1 1/4	65	157	0,90
<b>3.240.AA.38-A</b>	1 1/2	70	157	1,00
<b>3.240.AA.50-A</b>	2	85	157	1,25
<b>3.240.AA.65-A</b>	2 1/2	100	157	1,50
<b>3.240.AA.71-A</b>	3	115	157	1,75
<b>3.240.AA.80-A</b>	4	140	157	3,30

**RUBINETTO A SFERA MICROFUSA A PASSAGGIO TOTALE CON ATTACCHI GAS FEMMINA - FEMMINA**

Microfusion ball valve FEMALE-FEMALE GAS ends • Vanne à boule microfusion avec attelages GAS FEMELLE-FEMELLE

**3.800.AA**



	G inch	C mm	D mm	E mm	kg
<b>3.100.AA.04-B</b>	1/4	60	110	43	0,20
<b>3.100.AA.05-B</b>	3/8	65	110	43	0,20
<b>3.100.AA.08-B</b>	1/2	65	110	46	0,30
<b>3.100.AA.10-B</b>	3/4	75	130	54	0,55
<b>3.100.AA.13-B</b>	1	93	175	60	0,86
<b>3.100.AA.29-B</b>	1 1/4	104	175	85	1,50
<b>3.100.AA.38-B</b>	1 1/2	133	250	120	2,30
<b>3.100.AA.50-B</b>	2	142	250	125	3,50
<b>3.100.AA.65-B</b>	2 1/2	170	300	135	6,00
<b>3.100.AA.71-B</b>	3	197	300	150	



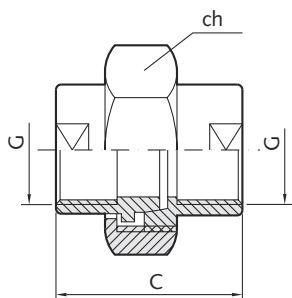
# RACCORDI

Pipe fittings • Raccords

## RACCORDO COMPLETO 3 PEZZI FILETTATO GAS FEMMINA

FEMALE-FEMALE GAS complete union • Raccord 3 pieces fileté GAS FEMELLE-FEMELLE

4.030.AA. --

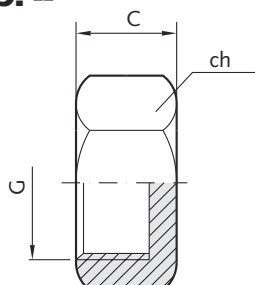


	G inch	C mm	ch mm	kg
4.030.AA.04-A	1/4	41	32	0,12
4.030.AA.05-A	3/8	43	36	0,16
4.030.AA.08-A	1/2	46	46	0,30
4.030.AA.10-A	3/4	52	50	0,33
4.030.AA.13-A	1	56	55	0,40
4.030.AA.29-A	1 1/4	62	70	0,75
4.030.AA.38-A	1 1/2	65	75	0,87
4.030.AA.50-A	2	75	90	1,25

## TAPPO FILETTATO GAS FEMMINA

FEMALE GAS cap • Bouchon fileté GAS FEMELLE

4.120.A9. --

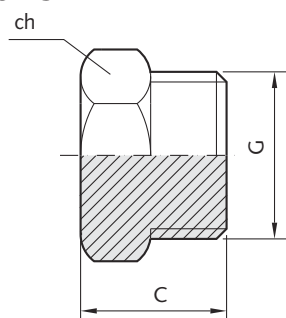


	G inch	C mm	ch mm	kg
4.120.A9.04-A	1/4	16	19	0,02
4.120.A9.05-A	3/8	17	24	0,04
4.120.A9.08-A	1/2	19	27	0,05
4.120.A9.10-A	3/4	20	32	0,08
4.120.A9.13-A	1	22	40	0,14
4.120.A9.29-A	1 1/4	25	50	0,19
4.120.A9.38-A	1 1/2	29	55	0,26
4.120.A9.50-A	2	29	65	0,42

## TAPPO FILETTATO GAS MASCHIO

MALE GAS plug • Bouchon fileté GAS MALE

4.130.B9. --

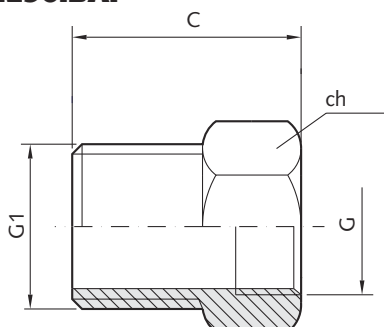


	G inch	C mm	ch mm	kg
4.130.B9.04-A	1/4	20	15	0,03
4.130.B9.05-A	3/8	22	19	0,04
4.130.B9.08-A	1/2	23	24	0,08
4.130.B9.10-A	3/4	26	30	0,14
4.130.B9.13-A	1	30	36	0,24
4.130.B9.29-A	1 1/4	30	46	0,42
4.130.B9.38-A	1 1/2	35	50	0,58
4.130.B9.50-A	2	36	65	1,00

## RIDUZIONE DA GAS MASCHIO A GAS FEMMINA

GAS reducer MALE-FEMALE • Reduction GAS MALE-FEMELLE

4.290.BA. --



	G1 inch	G inch	C mm	ch mm	kg
4.290.BA.04-A	1/4	1/8	20	15	
4.290.BA.05-A	3/8	1/4	22	19	
4.290.BA.08-A	1/2	3/8	23	24	
4.290.BA.10-A	3/4	1/2	26	30	
4.290.BA.13-A	1	3/4	30	36	
4.290.BA.29-A	1 1/4	1	30	46	
4.290.BA.38-A	1 1/2	1 1/4	35	50	
4.290.BA.50-A	2	1 1/2	36	65	

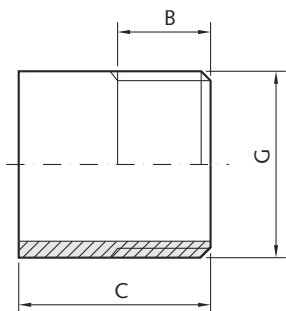
# RACCORDI

Pipe fittings • *Raccords*

## TRONCHETTO FILETTATO GAS MASCHIO

GAS threaded • *Embout MALE GAS*

### 4.530.CB. --

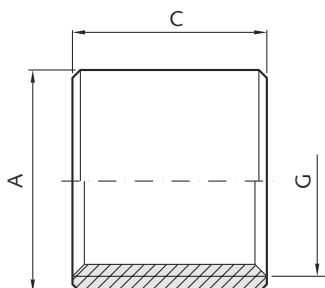


	G inch	B mm	C mm	kg
4.530.CB.01-A	1/8	10	20	0,01
4.530.CB.04-A	1/4	12	25	0,02
4.530.CB.05-A	3/8	12	25	0,04
4.530.CB.08-A	1/2	15	30	0,06
4.530.CB.10-A	3/4	15	30	0,10
4.530.CB.13-A	1	17	35	0,14
4.530.CB.29-A	1 1/4	18	38	0,16
4.530.CB.38-A	1 1/2	20	40	0,20
4.530.CB.50-A	2	22	45	0,25
4.530.CB.65-A	2 1/2	23	50	0,35
4.530.CB.71-A	3	26	55	0,40
4.530.CB.80-A	4	28	60	

## MANICOTTO FILETTATO GAS FEMMINA

Sockets GAS FEMALE • *Manchon FEMELLE GAS*

### 4.570.AA. --

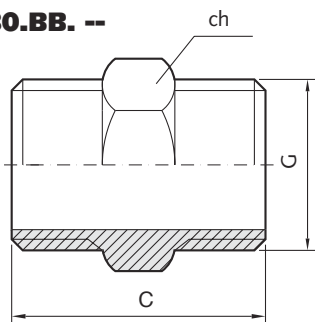


	G inch	A mm	C mm	kg
4.570.AA.01-A	1/8	14	18	0,02
4.570.AA.04-A	1/4	18	20	0,03
4.570.AA.05-A	3/8	22	21	0,04
4.570.AA.08-A	1/2	27	25	0,06
4.570.AA.10-A	3/4	32	30	0,10
4.570.AA.13-A	1	40	34	0,15
4.570.AA.29-A	1 1/4	50	36	0,23
4.570.AA.38-A	1 1/2	56	38	0,26
4.570.AA.50-A	2	68	42	0,30
4.570.AA.65-A	2 1/2	84	48	0,58
4.570.AA.71-A	3	97	50	0,52
4.570.AA.80-A	4	124	60	1,10

## NIPPLO FILETTATO GAS

GAS hexagonal nipple • *Nipple exagonal*

### 4.580.BB. --

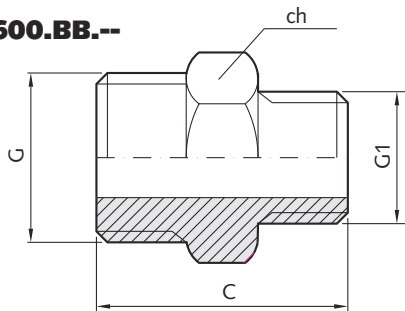


	G inch	C mm	ch mm	kg
4.580.BB.04-A	1/4	30	15	0,02
4.580.BB.05-A	3/8	34	19	0,03
4.580.BB.08-A	1/2	38	24	0,05
4.580.BB.10-A	3/4	43	30	0,09
4.580.BB.13-A	1	46	36	0,14
4.580.BB.29-A	1 1/4	50	46	0,25
4.580.BB.38-A	1 1/2	58	50	0,25
4.580.BB.50-A	2	60	65	0,40

## NIPPLO RIDOTTO FILETTATO GAS

GAS exagonal nipple reduced • *Nipple GAS exagonal reduit*

### 4.600.BB.--



	G inch	G1 inch	A mm	C mm	ch mm	kg
4.600.BB.04-A	1/4	1/8	5,7	29	15	0,02
4.600.BB.05-A	3/8	1/4	8,9	33	19	0,03
4.600.BB.08-A	1/2	3/8	12,6	36	24	0,05
4.600.BB.10-A	3/4	1/2	16	42	30	0,09
4.600.BB.13-A	1	3/4	21	45	36	0,13
4.600.BB.29-A	1 1/4	1	27	49	46	0,22
4.600.BB.38-A	1 1/2	1 1/4	35	54	50	0,22
4.600.BB.50-A	2	1 1/2	41	59	65	0,40

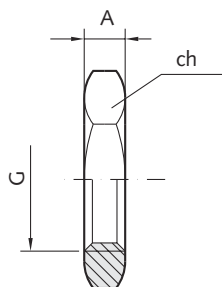
# RACCORDI

Pipe fittings • *Raccords*

## DADO ESAGONALE FILETTATO GAS

Nut exagonal GAS • *Coutre-ecrou exagonal GAS*

4.610.A9. --

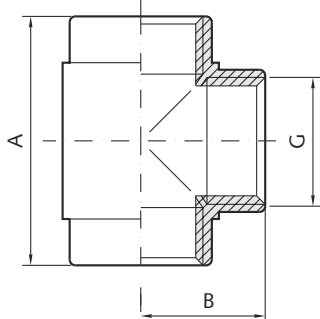


	G inch	A mm	ch mm	kg
4.610.A9.04-A	1/4	6	19	0,01
4.610.A9.05-A	3/8	7	27	0,03
4.610.A9.08-A	1/2	8	30	0,05
4.610.A9.10-A	3/4	9	36	0,06
4.610.A9.13-A	1	10	46	0,08
4.610.A9.29-A	1 1/4	11	50	0,08
4.610.A9.38-A	1 1/2	12	60	0,18
4.610.A9.50-A	2	13	70	0,20

## RACCORDO A " T " FILETTATO GAS FEMMINA

Tee GAS FEMELLE • *Raccord a " T " FEMELLE GAS*

4.620.AA. --

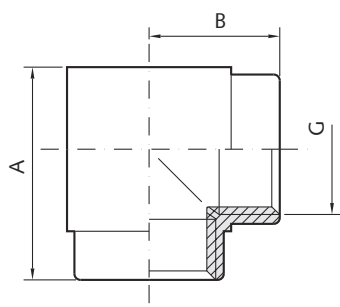


	G inch	A mm	B mm	kg
4.620.AA.04-A	1/4	40	20	0,08
4.620.AA.05-A	3/8	45	23	0,15
4.620.AA.08-A	1/2	50	28	0,20
4.620.AA.10-A	3/4	63	32	0,37
4.620.AA.13-A	1	68	33	0,50
4.620.AA.29-A	1 1/4	90	45	0,80
4.620.AA.38-A	1 1/2	95	48	1,25
4.620.AA.50-A	2	110	55	1,40

## GOMITO FILETTATO GAS FEMMINA

90° elbow GAS FEMALE • *Coude FEMELLE GAS*

4.630.AA. --

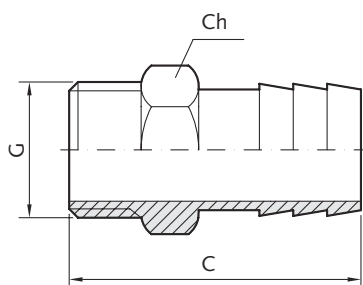


	G inch	A mm	B mm	kg
4.630.AA.04-A	1/4	30	20	0,08
4.630.AA.05-A	3/8	35	23	0,12
4.630.AA.08-A	1/2	40	28	0,20
4.630.AA.10-A	3/4	50	32	0,32
4.630.AA.13-A	1	55	33	0,50
4.630.AA.29-A	1 1/4	70	45	0,80
4.630.AA.38-A	1 1/2	75	48	1,50
4.630.AA.50-A	2	90	55	2,00

## RACCORDO GAS MASCHIO - PORTAGOMMA CON ESAGONO

Exagonal hose nipple • *GAS MALE ligaturer*

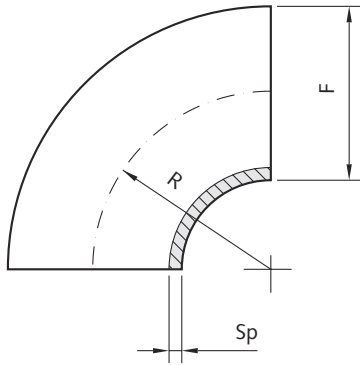
4.230.BV. --



	G inch	ch mm	C mm	kg
4.230.BV.04-A	1/4	15	44	0,12
4.230.BV.05-A	3/8	19	50	0,16
4.230.BV.08-A	1/2	24	55	0,28
4.230.BV.10-A	3/4	30	62	0,33
4.230.BV.13-A	1	36	66	0,40
4.230.BV.29-A	1 1/4	46	70	0,75
4.230.BV.38-A	1 1/2	50	83	0,87
4.230.BV.50-A	2	65	96	0,95
4.230.BV.65-A	2 1/2	80	108	1,30

**CURVA 90° A SALDARE GREZZA (ISO 1127)**  
 90° welding bend "mat" • Coude 90° à souder "brut"

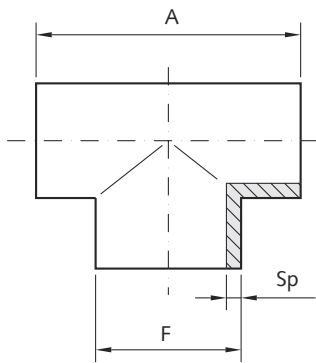
**5.210.CC. --**



	G inch	F mm	R mm	sp mm	kg
<b>5.210.CC.04-A</b>	1/4	13,7	20	1,5	0,04
<b>5.210.CC.05-A</b>	3/8	17,2	26	1,5	0,05
<b>5.210.CC.08-A</b>	1/2	21,3	28	1,5	0,05
<b>5.210.CC.10-A</b>	3/4	26,9	30	2	0,05
<b>5.210.CC.13-A</b>	1	33,7	38	2	0,07
<b>5.210.CC.29-A</b>	1 1/4	42,4	48	2	0,10
<b>5.210.CC.38-A</b>	1 1/2	48,3	57	2	0,15
<b>5.210.CC.50-A</b>	2	60,3	76	2	0,35
<b>5.210.CC.65-A</b>	2 1/2	76,1	96	2	0,56
<b>5.210.CC.71-A</b>	3	88,9	114,5	2	0,78
<b>5.210.CC.75-A</b>	3 1/2	101,6	133,5	2	0,84
<b>5.210.CC.80-A</b>	4	114,3	152,5	2	1,35
<b>5.210.CC.82-A</b>	5	139,7	190,5	2	

**TEE A SALDARE GREZZO (ISO 1127)**  
 Welding tee "mat" • Te à souder "brut"

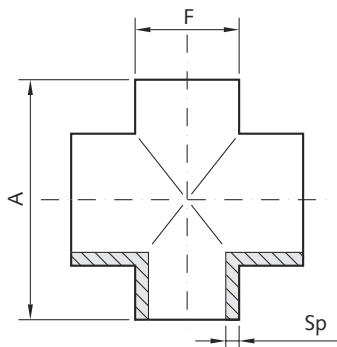
**5.410.CC. --**



	G inch	F mm	A mm	sp mm	kg
<b>5.410.CC.04-A</b>	1/4	13,7	55	2	0,05
<b>5.410.CC.05-A</b>	3/8	17,2	60	2	0,07
<b>5.410.CC.08-A</b>	1/2	21,3	51	2	0,09
<b>5.410.CC.10-A</b>	3/4	26,9	57	2	0,11
<b>5.410.CC.13-A</b>	1	33,7	76	2	0,15
<b>5.410.CC.29-A</b>	1 1/4	42,4	95	2	0,20
<b>5.410.CC.38-A</b>	1 1/2	48,3	114	2	0,30
<b>5.410.CC.50-A</b>	2	60,3	127	2	0,40
<b>5.410.CC.65-A</b>	2 1/2	76,1	156	2	0,60
<b>5.410.CC.71-A</b>	3	88,9	171	2	0,84
<b>5.410.CC.75-A</b>	3 1/2	101,6	210	2	0,95
<b>5.410.CC.80-A</b>	4	114,3	210	2	1,10
<b>5.410.CC.82-A</b>	5	139,7	248	2	

**CROCE A SALDARE GREZZA (ISO 1127)**  
 Welding cross "mat" • Croix à souder "brut"

**5.510.CC.--**



	G inch	F mm	A mm	sp mm	kg
<b>5.510.CC.05-A</b>	3/8	17,2	60	2	0,08
<b>5.510.CC.08-A</b>	1/2	21,3	51	2	0,10
<b>5.510.CC.10-A</b>	3/4	26,9	57	2	0,13
<b>5.510.CC.13-A</b>	1	33,7	76	2	0,16
<b>5.510.CC.29-A</b>	1 1/4	42,4	95	2	0,22
<b>5.510.CC.38-A</b>	1 1/2	48,3	114	2	0,33
<b>5.510.CC.50-A</b>	2	60,3	127	2	0,50
<b>5.510.CC.65-A</b>	2 1/2	76,1	156	2	0,70
<b>5.510.CC.71-A</b>	3	88,9	171	2	0,90
<b>5.510.CC.80-A</b>	4	114,3	210	2	1,20

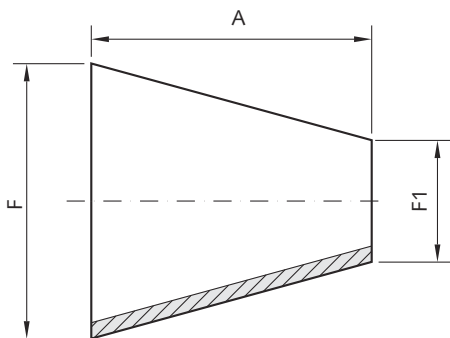
# TUBI, CURVE, TEE, RIDUZIONI, FLANGE

Tubes, bends, tee, reducers, flanges • Tubes, coudes, Te, réductions, brides

## RIDUZIONE CONCENTRICA A SALDARE GREZZA ESTERNO-INTERNO (ISO 1127)

Welding concentric reducer "mat" external-internal • Réduction concentrique à souder "brut" extérieur-intérieur

### 5.610.CC. --

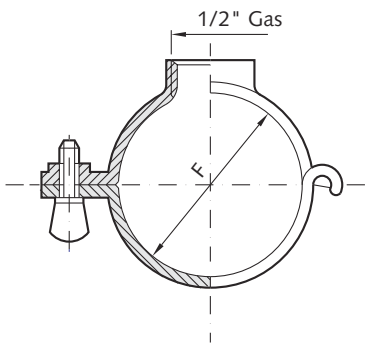


	G inch	G1 mm	F mm	F1 mm	A mm	kg
5.611.CC.10-A	3/4	1/2	26,9	21,3	38	0,08
5.611.CC.13-A	1	3/4	33,7	26,9	51	0,10
5.611.CC.29-A	1 1/4	1	42,4	33,7	51	0,11
5.611.CC.38-A	1 1/2	1 1/4	48,3	42,4	64	0,13
5.611.CC.50-A	2	1 1/2	60,3	48,3	76	0,19
5.611.CC.65-A	2 1/2	2	76,1	60,3	89	0,28
5.611.CC.71-A	3	2 1/2	88,9	76,1	89	0,32
5.611.CC.75-A	3 1/2	3	101,6	88,9	95	0,50
5.611.CC.80-A	4	3 1/2	114,3	101,6	102	0,58
5.612.CC.13-A	1	1/2	33,7	21,3	51	0,08
5.612.CC.29-A	1 1/4	3/4	42,4	26,9	51	0,09
5.612.CC.38-A	1 1/2	1	48,3	33,7	64	0,13
5.612.CC.50-A	2	1 1/4	60,3	42,4	76	0,19
5.612.CC.65-A	2 1/2	1 1/2	76,1	48,3	89	0,25
5.612.CC.71-A	3	2	88,9	60,3	89	0,32
5.612.CC.75-A	3 1/2	2 1/2	101,6	76,1	95	0,50
5.612.CC.80-A	4	3	114,3	88,9	102	0,68
5.613.CC.38-A	1 1/2	3/4	48,3	26,9	64	0,12
5.613.CC.50-A	2	1	60,3	33,7	76	0,18
5.613.CC.75-A	3 1/2	2	101,6	60,3	95	0,50
5.613.CC.80-A	4	2 1/2	114,3	76,1	102	0,56

## REGGITUBO CON ATTACCO FILETTATO GAS

Pipe support • Collier pour tube avec manchon fileté GAZ

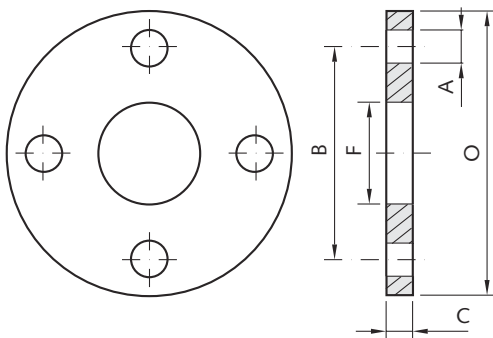
### 5.810.C9. --



	G inch	F mm	kg
5.810.C9.08-A	1/2	21,3	0,07
5.810.C9.10-A	3/4	26,9	0,09
5.810.C9.13-A	1	33,7	0,11
5.810.C9.29-A	1 1/4	42,4	0,12
5.810.C9.38-A	1 1/2	48,3	0,13
5.810.C9.50-A	2	60,3	0,16
5.810.C9.65-A	2 1/2	76,1	0,21
5.810.C9.71-A	3	88,9	0,22
5.810.C9.75-A	3 1/2	101,6	0,25
5.810.C9.80-A	4	114,3	0,27

**FLANGIA PIANA UNI 2276 PN 6**  
 Flange UNI 2276 PN6 • Bride UNI 2276 PN6

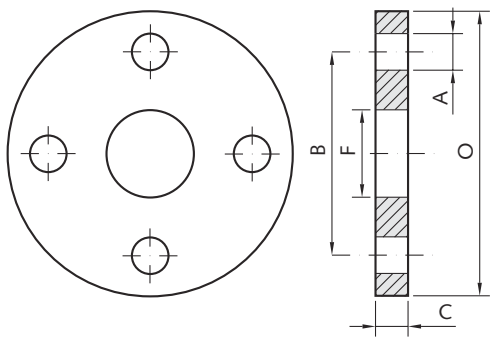
**5.820.X9. --**



	DN mm	F mm	A mm	B mm	C mm	O mm	* n°	kg
<b>5.820.X9.08-A</b>	15	22	11	55	10	80	4	0,33
<b>5.820.X9.10-A</b>	20	27,5	11	65	12	90	4	0,51
<b>5.820.X9.13-A</b>	25	34	11	75	12	100	4	0,62
<b>5.820.X9.29-A</b>	32	43	14	90	14	120	4	1,02
<b>5.820.X9.38-A</b>	40	49	14	100	14	130	4	1,18
<b>5.820.X9.50-A</b>	50	61,5	14	110	14	140	4	1,30
<b>5.820.X9.65-A</b>	65	77	14	130	14	160	4	1,63
<b>5.820.X9.71-A</b>	80	90	18	150	16	190	4	2,63
<b>5.820.X9.80-A</b>	100	115,5	18	170	16	210	4	2,91
<b>5.820.X9.82-A</b>	125	141	18	200	18	240	8	3,90

**FLANGIA PIANA UNI 2278 PN 16**  
 Flange UNI 2278 PN16 • Bride UNI 2278 PN16

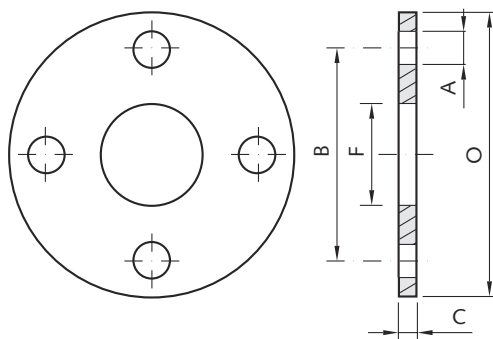
**5.820.Z9. --**



	DN mm	F mm	A mm	B mm	C mm	O mm	* n°	kg
<b>5.820.Z9.08-A</b>	15	22	14	65	12	95	4	0,57
<b>5.820.Z9.10-A</b>	20	27,5	14	75	14	105	4	0,82
<b>5.820.Z9.13-A</b>	25	34	14	85	14	115	4	0,97
<b>5.820.Z9.29-A</b>	32	43	18	100	16	140	4	1,67
<b>5.820.Z9.38-A</b>	40	49	18	110	16	150	4	1,85
<b>5.820.Z9.50-A</b>	50	61,5	18	125	18	165	4	2,45
<b>5.820.Z9.65-A</b>	65	77	18	145	18	185	4	3,00
<b>5.820.Z9.71-A</b>	80	90	18	160	20	200	8	3,77
<b>5.820.Z9.80-A</b>	100	115,5	18	180	22	220	8	4,40
<b>5.820.Z9.82-A</b>	125	141	18	210	24	250	8	5,92

**FLANGIA PIANA SPESSORE ENOLOGICO PN 6**  
 Reduced thickness flange PN6 • Bride ronde PN6 epaisseur enologique

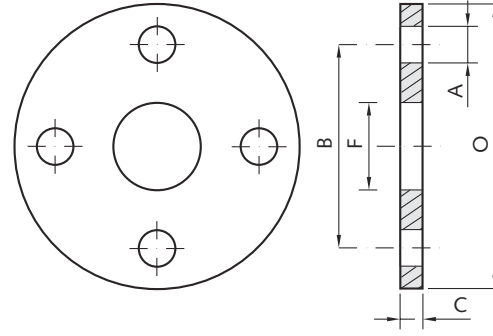
**5.825.X9. --**



	DN mm	F mm	A mm	B mm	C mm	O mm	* n°	kg
<b>5.825.X9.08-A</b>	15	22	11	55	6	80	4	0,27
<b>5.825.X9.10-A</b>	20	27,5	11	65	8	90	4	0,34
<b>5.825.X9.13-A</b>	25	34	11	75	8	100	4	0,41
<b>5.825.X9.29-A</b>	32	43	14	90	8	120	4	0,58
<b>5.825.X9.38-A</b>	40	49	14	100	8	130	4	0,90
<b>5.825.X9.50-A</b>	50	61,5	14	110	10	140	4	1,00
<b>5.825.X9.65-A</b>	65	77	14	130	12	160	4	1,30
<b>5.825.X9.71-A</b>	80	90	18	150	12	190	4	2,00
<b>5.825.X9.80-A</b>	100	115,5	18	170	12	210	4	2,50
<b>5.825.X9.82-A</b>	125	141	18	200	12	240	8	3,10

**FLANGIA PIANA A SPESSORE ENOLOGICO PN 16**  
 Reduced thickness flange PN16 • Bride PN16 ronde epaisseur enologique

**5.825.Z9. --**



	DN mm	F mm	A mm	B mm	C mm	O mm	* n°	kg
<b>5.825.Z9.08-A</b>	15	2	14	65	8	95	4	0,38
<b>5.825.Z9.10-A</b>	20	27,5	14	75	8	105	4	0,47
<b>5.825.Z9.13-A</b>	25	34	14	85	8	115	4	0,56
<b>5.825.Z9.29-A</b>	32	43	18	100	8	140	4	0,81
<b>5.825.Z9.38-A</b>	40	49	18	110	10	150	4	1,16
<b>5.825.Z9.50-A</b>	50	61,5	18	125	10	165	4	1,37
<b>5.825.Z9.65-A</b>	65	77	18	145	12	185	4	2,00
<b>5.825.Z9.71-A</b>	80	90	18	160	12	200	8	2,26
<b>5.825.Z9.80-A</b>	100	115,5	18	180	12	220	8	2,40
<b>5.825.Z9.82-A</b>	125	141	18	210	14	250	8	3,45

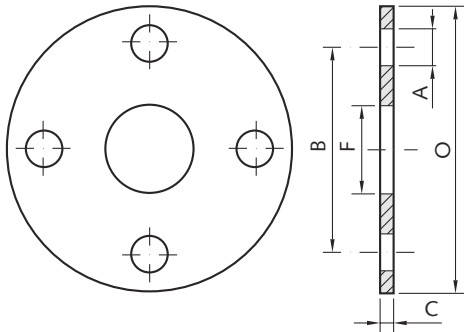
# TUBI, CURVE, TEE, RIDUZIONI, FLANGE

Tubes, bends, tee, reducers, flanges • Tubes, coudes, Te, réductions, brides

## GUARNIZIONE PER FLANGIA PIANA UNI 2276 PN 6

Gasket for flange UNI 2276 PN6 • Joint pour bride UNI 2276 PN6

### 5.840.X9. --

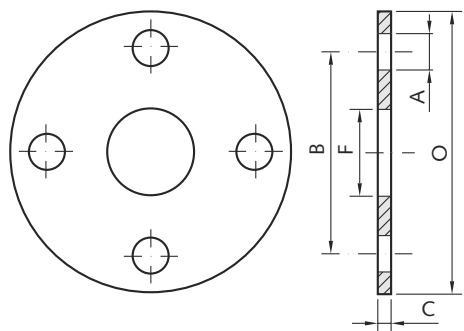


	DN mm	F mm	A mm	B mm	C mm	O mm	N°	kg
5.840.X9.08-N	15	22	11	55	3	80	4	
5.840.X9.10-N	20	28	11	65	3	90	4	
5.840.X9.13-N	25	34	11	75	3	100	4	
5.840.X9.29-N	32	43	14	90	3	120	4	
5.840.X9.38-N	40	49	14	100	3	130	4	
5.840.X9.50-N	50	62	14	110	3	140	4	
5.840.X9.65-N	65	77	14	130	3	160	4	
5.840.X9.71-N	80	90	18	150	3	190	4	
5.840.X9.80-N	100	116	18	170	3	210	4	
5.840.X9.82-N	125	5	141	18	210	250	8	

## GUARNIZIONE PER FLANGIA PIANA UNI 2278 PN 16

Gasket for flange UNI 2278 PN16 • Joint pour bride UNI 2278 PN16

### 5.840.Z9. --

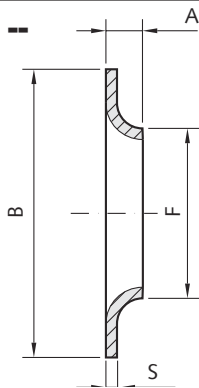


	DN mm	F mm	A mm	B mm	C mm	O mm	N°	kg
5.840.Z9.08-N	15	22	14	65	3	95	4	
5.840.Z9.10-N	20	28	14	75	3	105	4	
5.840.Z9.13-N	25	34	14	85	3	115	4	
5.840.Z9.29-N	32	43	18	100	3	140	4	
5.840.Z9.38-N	40	49	18	110	3	150	4	
5.840.Z9.50-N	50	62	18	125	3	165	4	
5.840.Z9.65-N	65	77	18	145	2	185	4	
5.840.Z9.71-N	80	90	18	160	3	200	8	
5.840.Z9.80-N	100	115	18	180	3	220	8	
5.840.Z9.82-N	125	141	18	210	3	250	8	

## CARTELLA A SALDARE

Welding support Lip • Collet à souder

### 5.860.C9. --

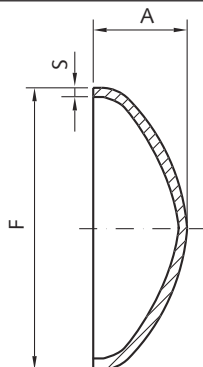


	DN mm	G inch	F mm	A mm	S mm	B mm
5.860.C9.08-A	15	1/2	21,3	6	2	44
5.860.C9.10-A	20	3/4	26,9	8	2	58
5.860.C9.13-A	25	1	33,7	9	2	68
5.860.C9.29-A	32	1 1/4	42,4	10	2	78
5.860.C9.38-A	40	1 1/2	48,3	10	2	88
5.860.C9.50-A	50	2	60,3	12	2	102
5.860.C9.65-A	65	2 1/2	76,1	12	2	122
5.860.C9.71-A	80	3	88,9	14	2	138
5.860.C9.75-A	90	3 1/2	101,6	14	2	148
5.860.C9.80-A	100	4	114,3	14	2	158

## FONDO BOMBATO A SALDARE

Welding swell bottom • Fond bombé à sauder

### 5.870.C9. --



	DN mm	G inch	S mm	F mm	A mm
5.870.C9.08-A	15	1/2	2	21,3	15
5.870.C9.10-A	20	3/4	2	26,9	11
5.870.C9.13-A	25	1	2	33,7	12
5.870.C9.29-A	32	1 1/4	2	42,4	17
5.870.C9.38-A	40	1 1/2	2	48,3	17
5.870.C9.50-A	50	2	2	60,3	20
5.870.C9.65-A	65	2 1/2	2	76,1	28
5.870.C9.71-A	80	3	2	88,9	28
5.870.C9.75-A	100	3 1/2	2	101,6	30
5.870.C9.80-A	100	4	2	114,3	30