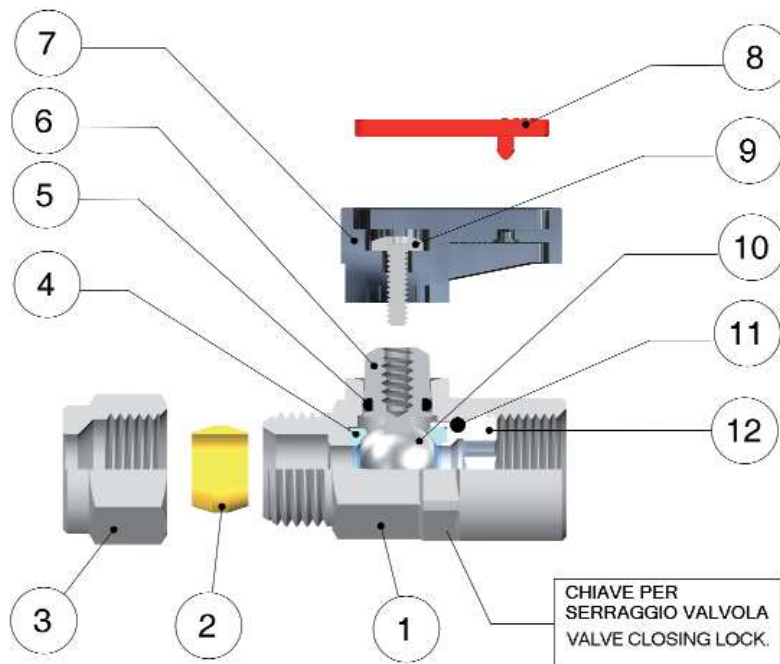




Serie / Series

Ghilux

Valvole a sfera
Ball valves



BS EN 331:1998

**Tested by GL to
BS EN 331:1998**

Scheda Materiali / Specifications

| | |
|---|---|
| 1 Corpo in Ottone cromato | 1 Chrome Nickel-plated Brass Body |
| 2 Ogiva in Ottone (PTFE a richiesta) | 2 Brass Olive (if Requested PTFE) |
| 3 Dado in Ottone cromato | 3 Chrome Nickel-plated Brass Nut |
| 4 Guarnizione sede sfera in PTFE | 4 PTFE Seats |
| 5 Guarnizione O-RING in NBR 70 (FKM a richiesta) | 5 NBR 70 Seal O-RING (FKM if required) |
| 6 Albero in Ottone cromato | 6 Chrome Nickel-plated Brass Spindle |
| 7 Maniglia in PA66 Caricato vetro | 7 PA66 Glass reinforced Handle |
| 8 Piastrina in Resina Acetalica | 8 Acetalic resin Plate |
| 9 Vite in acciaio | 9 Steel Screw |
| 10 Sfera in Ottone cromato | 10 Chrome Nickel-plated Brass Ball |
| 11 Guarnizione O-RING in NBR 70 (FKM a richiesta) | 11 NBR 70 Seal O-RING (FKM if required) |
| 12 Ghiera o raccordo in Ottone | 12 Brass Fitting |

Pressioni / Pressures

Pressione minima / Minimum Pressure: -0.99 bar (-0.099MPa)
Pressione massima / Maximum pressure: 20 bar (2 MPa)

Temperature / Temperatures

Temperatura minima / Minimum temperature: -20 °C
Temperatura massima / Maximum temperature: +80 °C

Filettature / Threads

Gas conica conforme ISO 7.1, BS 21, DIN 2999 / Tapered gas in conformity with ISO 7.1, BS 21, DIN 2999.
Gas cilindrica conforme ISO 228 Classe A / Parallel gas in conformity with ISO 228 Class A.

Tubi di collegamento / Connection Tubes

Tubi in rame, tubi metallici in genere, raccorderia varia.
PA6, PA11, ecc. utilizzando l'apposita bussolina di rinforzo
art. 10770.

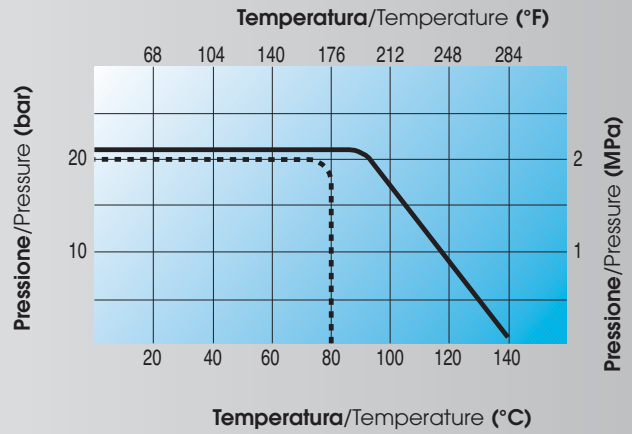
*Tubes made in copper, metal in general and various fittings.
PA6, PA11 etc. with an inside support bush art 10770.*

Fluidi compatibili / Fluids

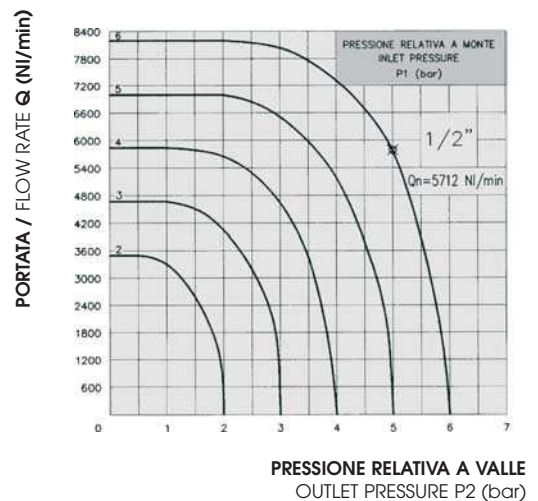
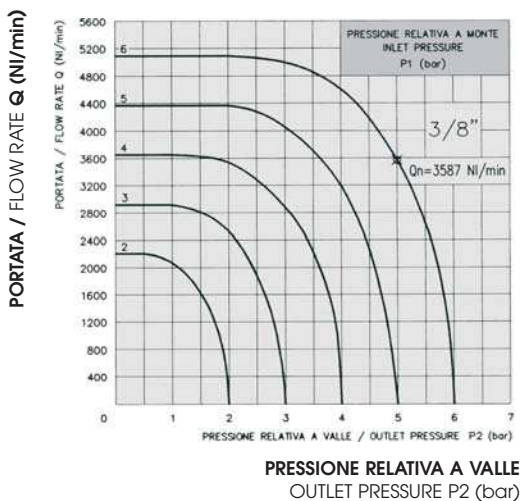
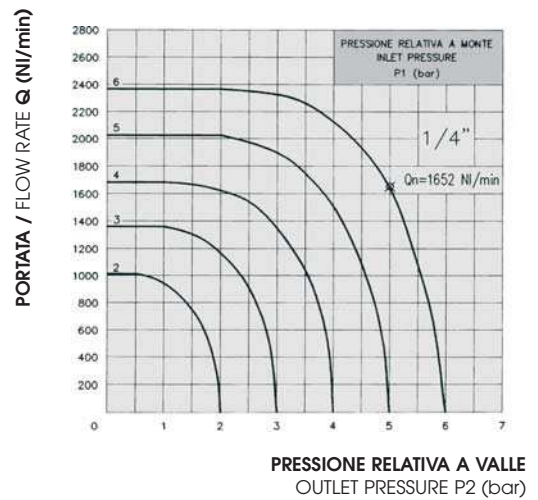
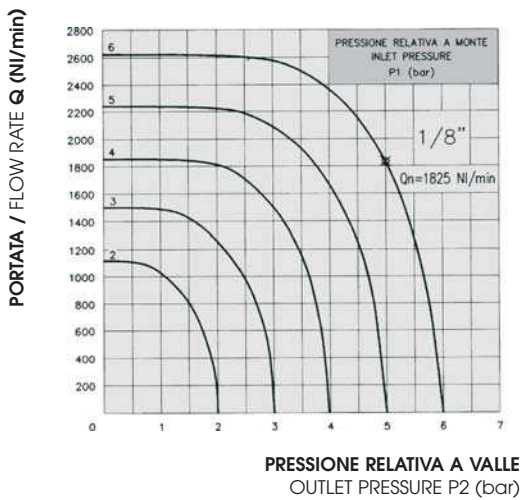
Aria compressa, acqua, oli.
*1° e 2° famiglia di gas a media pressione.
3° famiglia di gas a bassa pressione.
Compressed air, water, oils.
*1st and 2nd family gases at medium pressure.
3rd family gases at low pressure.

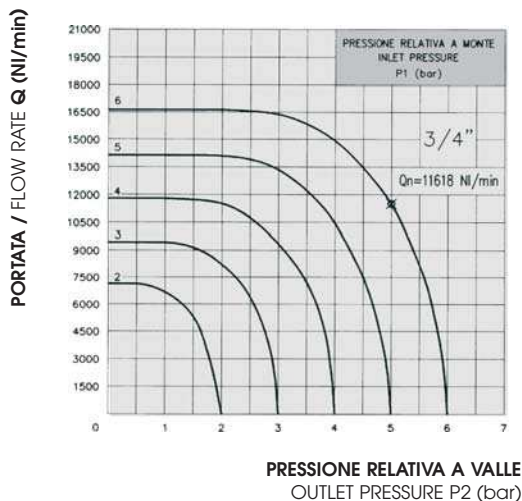
DIAGRAMMA PRESSIONE-TEMPERATURA
 PRESSURE-TEMPERATURE RATINGS DIAGRAM

- PTFE + NBR
- PTFE + FKM



CURVE CARATTERISTICHE DI FLUSSO PER ARIA
 RELATIVE ALLE VALVOLE A SFERA GHILUX ART. 6400 FEMMINA-FEMMINA
 CHARACTERISTIC CURVES OF FLOW FOR AIR
 PERTINENT TO THE BALL VALVES GHILUX ART. 6400 FEMALE-FEMALE





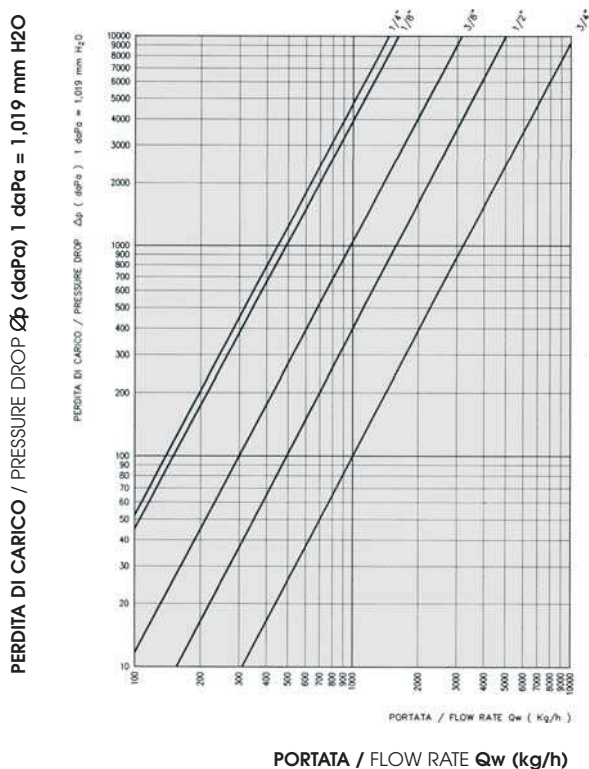
Sui vari diagrammi é evidenziato il valore di Q_n relativo ad una pressione $P_1 = 6$ bar e ad una pressione $P_2 = 5$ bar.

On the different diagrams is marked the value of flow rate Q_n pertinent to a pressure $P_1 = 6$ bar and to a pressure $P_2 = 5$ bar.

CERTIFICATO DI PROVA N° 36794 RILASCIATO DALL' "ISTITUTO GIORDANO" IN DATA 13/06/1990.

TEST CERTIFICATE N° 36794 ISSUED BY THE "ISTITUTO GIORDANO" ON THE 13/06/1990.

DIAGRAMMA DELLA CARATTERISTICA PORTATA-PERDITA DI CARICO RELATIVO ALLE VALVOLE A SFERA GHILUX ART. 6400 FEMMINA-FEMMINA PER ACQUA
DIAGRAM OF THE FLOW RATE AND PRESSURE DROP CHARACTERISTICS PERTINENT TO THE BALL VALVES GHILUX ART. 6400 FEMALE-FEMALE FOR WATER



COEFFICIENTI DI PORTATA Kv
FLOW RATE FACTORS Kv

Riportiamo in tabella il coefficiente di portata K_v delle valvole a sfera GHILUX, ricordando che tale coefficiente rappresenta la quantità d' acqua che attraversa la valvola nell'unità di tempo (Kg/h) alla temperatura di 15.5° C e che determina una caduta di pressione unitaria.

On the following table we specify the flow rate factor K_v of the ball valves GHILUX, we remind You that this factor represent the quantity of water that cross the valve in the unit time (Kg/h) at the temperature of 15.5° C and it determines a drop of unitary pressure.

| Misura Size | Coefficiente di Portata Idraulica Factor of hydraulic flow rate K_v (Kg/h) |
|----------------|--|
| 1/8" | 1614 |
| 1/4" | 1461 |
| 3/8" | 3164 |
| 1/2" | 5051 |
| 3/4" | 10274 |

CERTIFICATO DI PROVA N. 36547 RILASCIATO DALL' "ISTITUTO GIORDANO" IN DATA 31/05/1990
 TEST CERTIFICATE N. 36547 ISSUED BY THE "ISTITUTO GIORDANO" ON THE 31/05/1990

COME ORDINARE

Le valvole a sfera standard della serie GHILUX prevedono:

- Trattamento superficiale di CROMATURA
- Ogiva in OTTONE
- Maniglia CORTA
- Piastrina ROSSA

Gli articoli standard possono essere ordinati specificando solo CODICE, MISURA, QUANTITA'.

Ogni variazione allo standard deve essere specificata sull'ordine mediante una descrizione (es. Maniglia Lunga, Piastrina Verde, ecc.).

HOW TO ORDER

The ball valves GHILUX series are supplied with:

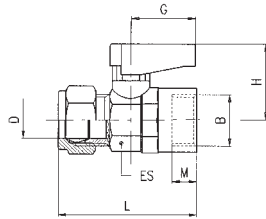
- Surface treatment of CHROME-NICKEL PLATED
- BRASS Olive
- SHORT Handle
- RED Plate

To order the standard items simply specify the ARTICLE CODE, SIZE and QUANTITY.

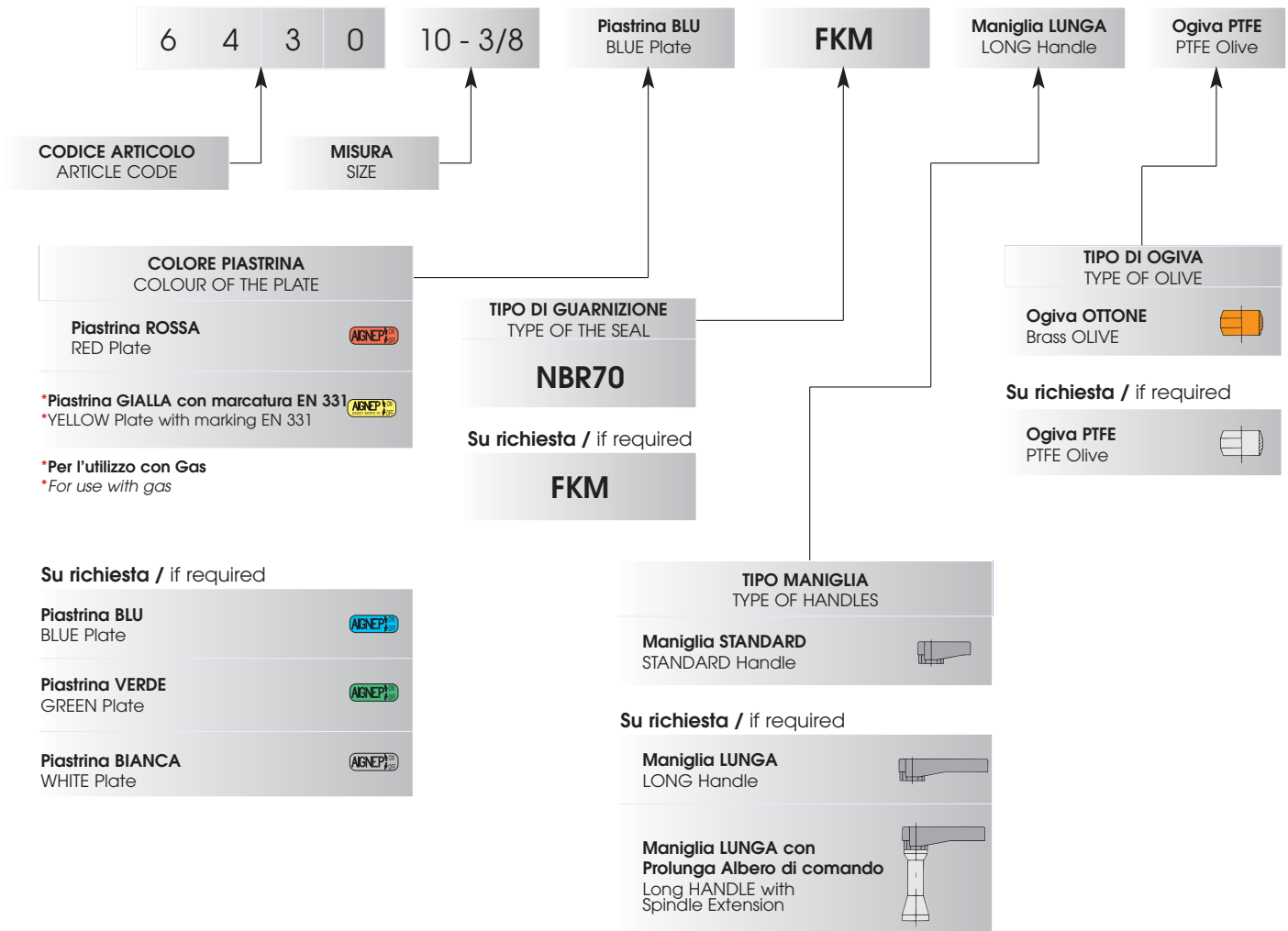
Every kind of changes must be specified on the order using a description (ex. LONG handle, GREEN plate, etc.).

6430

TUBO - FEMMINA G ISO 228 - TUBE - FEMALE G ISO 228

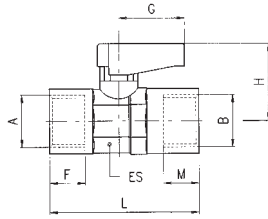


| D | B | (DN) | ES | M | L | G | H | Conf. Pack. |
|----|-----|------|-------|----|------|----|------|-------------|
| 6 | 1/8 | 5,5 | 14-15 | 7 | 41 | 19 | 21 | 25 |
| 8 | 1/8 | 5,5 | 14-15 | 7 | 43 | 19 | 21 | 25 |
| 8 | 1/4 | 5,5 | 14-15 | 8 | 43 | 19 | 21 | 25 |
| 10 | 3/8 | 8 | 18-19 | 9 | 48 | 19 | 22 | 10 |
| 12 | 3/8 | 8 | 18-19 | 9 | 49 | 19 | 22 | 10 |
| 14 | 1/2 | 10 | 22-23 | 10 | 55,5 | 26 | 30,5 | 10 |
| 15 | 1/2 | 10 | 22-23 | 10 | 55,5 | 26 | 30,5 | 10 |
| 16 | 3/4 | 14 | 28-30 | 12 | 63,5 | 50 | 33 | 5 |
| 18 | 3/4 | 14 | 28-30 | 12 | 63,5 | 50 | 33 | 5 |



6300

FEMMINA RP ISO 7 - FEMMINA RP ISO 7 - FEMALE RP ISO 7 - FEMALE RP ISO 7

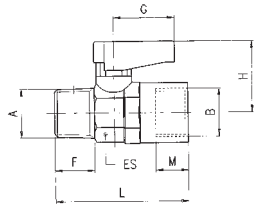


| A | B | (DN) | ES | F | M | L | G | H | Conf. Pack. |
|-----|-------|------|-------|------|------|----|----|------|-------------|
| 1/8 | - 1/8 | 5.5 | 14-15 | 7.4 | 7.4 | 36 | 19 | 21 | 25 |
| 1/4 | - 1/4 | 5.5 | 14-15 | 11 | 11 | 43 | 19 | 21 | 25 |
| 3/8 | - 3/8 | 8 | 18-19 | 11.4 | 11.4 | 47 | 19 | 22 | 10 |
| 1/2 | - 1/2 | 10 | 22-23 | 15 | 15 | 59 | 26 | 30.5 | 10 |
| 3/4 | - 3/4 | 14 | 28-30 | 16.3 | 16.3 | 67 | 50 | 33 | 5 |



6310

MASCHIO CONICO R ISO 7 - FEMMINA RP ISO 7 - TAPER MALE R ISO 7 - FEMALE RP ISO 7

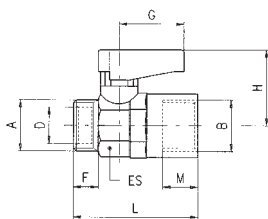


| A | B | (DN) | ES | F | M | L | G | H | Conf. Pack. |
|-----|-------|------|-------|------|------|------|----|------|-------------|
| 1/8 | - 1/8 | 5.5 | 14-15 | 7.4 | 7.4 | 36 | 19 | 21 | 25 |
| 1/4 | - 1/8 | 5.5 | 14-15 | 11 | 7.4 | 40.5 | 19 | 21 | 25 |
| 1/4 | - 1/4 | 5.5 | 14-15 | 11 | 11 | 43 | 19 | 21 | 25 |
| 3/8 | - 3/8 | 8 | 18-19 | 11.4 | 11.4 | 46 | 19 | 22 | 10 |
| 1/2 | - 1/2 | 10 | 22-23 | 15 | 15 | 57 | 26 | 30.5 | 10 |
| 3/4 | - 3/4 | 14 | 28-30 | 16.3 | 16.3 | 63 | 50 | 33 | 5 |



6320

MASCHIO CILINDRICO GA ISO 228 - FEMMINA RP ISO 7 - PARALLEL MALE GA ISO 228 - FEMALE RP ISO 7

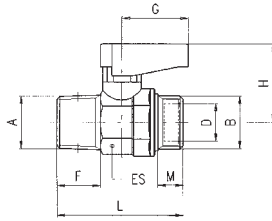


| A | B | (DN) | ES | D | F | M | L | G | H | Conf. Pack. |
|-----|-------|------|-------|------|----|------|------|----|------|-------------|
| 1/8 | - 1/8 | 5.5 | 14-15 | 6.2 | 7 | 7.4 | 34.5 | 19 | 21 | 25 |
| 1/4 | - 1/8 | 5.5 | 14-15 | 8.2 | 8 | 7.4 | 35.5 | 19 | 21 | 25 |
| 1/4 | - 1/4 | 5.5 | 14-15 | 8.2 | 8 | 11 | 38 | 19 | 21 | 25 |
| 3/8 | - 3/8 | 8 | 18-19 | 10.2 | 9 | 11.4 | 41.5 | 19 | 22 | 10 |
| 1/2 | - 1/2 | 10 | 22-23 | 15.2 | 10 | 15 | 50 | 26 | 30.5 | 10 |
| 3/4 | - 3/4 | 14 | 28-30 | 18.2 | 12 | 16.3 | 56.5 | 50 | 33 | 5 |



6330

MASCHIO CONICO R ISO 7 - MASCHIO CILINDRICO GA ISO 228 - TAPER MALE R ISO 7 - PARALLEL MALE GA ISO 228

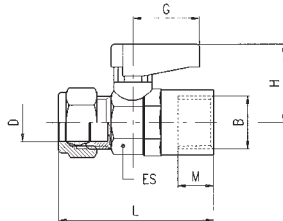


| A | B | DN | ES | D | F | M | L | G | H | Conf. Pack. |
|-----|-------|-----|-------|------|------|----|------|----|------|-------------|
| 1/8 | - 1/8 | 5.5 | 14-15 | 6.2 | 7.4 | 7 | 33.5 | 19 | 21 | 25 |
| 1/8 | - 1/4 | 5.5 | 14-15 | 8.2 | 7.4 | 8 | 33.5 | 19 | 21 | 25 |
| 1/4 | - 1/8 | 5.5 | 14-15 | 6.2 | 11 | 7 | 38 | 19 | 21 | 25 |
| 1/4 | - 1/4 | 5.5 | 14-15 | 8.2 | 11 | 8 | 38 | 19 | 21 | 25 |
| 3/8 | - 3/8 | 8 | 18-19 | 10.2 | 11.4 | 9 | 41.5 | 19 | 22 | 10 |
| 1/2 | - 1/2 | 10 | 22-23 | 15.2 | 15 | 10 | 49 | 26 | 30.5 | 10 |
| 3/4 | - 3/4 | 14 | 28-30 | 18.2 | 16.3 | 12 | 55.5 | 50 | 33 | 5 |



6340

TUBO - FEMMINA RP ISO 7 - TUBE - FEMALE RP ISO 7

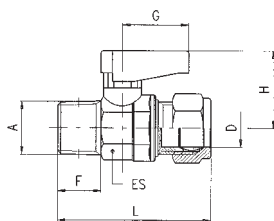


| D | B | DN | ES | M | L | G | H | Conf. Pack. |
|----|-------|-----|-------|------|------|----|------|-------------|
| 6 | - 1/8 | 5.5 | 14-15 | 7.4 | 41.5 | 19 | 21 | 25 |
| 8 | - 1/8 | 5.5 | 14-15 | 7.4 | 43 | 19 | 21 | 25 |
| 8 | - 1/4 | 5.5 | 14-15 | 11 | 46 | 19 | 21 | 25 |
| 10 | - 3/8 | 8 | 18-19 | 11.4 | 50.5 | 19 | 22 | 10 |
| 12 | - 3/8 | 8 | 18-19 | 11.4 | 51.5 | 19 | 22 | 10 |
| 14 | - 1/2 | 10 | 22-23 | 15 | 61.5 | 26 | 30.5 | 10 |
| 15 | - 1/2 | 10 | 22-23 | 15 | 61.5 | 26 | 30.5 | 10 |
| 16 | - 3/4 | 14 | 28-30 | 16.3 | 68 | 50 | 33 | 5 |
| 18 | - 3/4 | 14 | 28-30 | 16.3 | 68 | 50 | 33 | 5 |



6350

MASCHIO CONICO R ISO 7 - TUBO - TAPER MALE R ISO 7 - TUBE

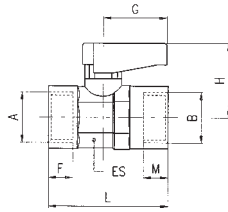


| A | D | DN | ES | F | L | G | H | Conf. Pack. |
|-----|------|-----|-------|------|------|----|------|-------------|
| 1/8 | - 6 | 5.5 | 14-15 | 7.4 | 40.5 | 19 | 21 | 25 |
| 1/8 | - 8 | 5.5 | 14-15 | 7.4 | 41.5 | 19 | 21 | 25 |
| 1/4 | - 6 | 5.5 | 14-15 | 1.1 | 46 | 19 | 21 | 25 |
| 1/4 | - 8 | 5.5 | 14-15 | 11 | 45 | 19 | 21 | 25 |
| 3/8 | - 10 | 8 | 18-19 | 11.4 | 50.5 | 19 | 22 | 10 |
| 3/8 | - 12 | 8 | 18-19 | 11.4 | 51.5 | 19 | 22 | 10 |
| 1/2 | - 14 | 10 | 22-23 | 15 | 59.5 | 26 | 30.5 | 10 |
| 1/2 | - 15 | 10 | 22-23 | 15 | 59.5 | 26 | 30.5 | 10 |
| 3/4 | - 16 | 14 | 28-30 | 16.3 | 67 | 50 | 33 | 5 |
| 3/4 | - 18 | 14 | 28-30 | 16.3 | 67 | 50 | 33 | 5 |



6400

FEMMINA G ISO 228 - FEMMINA G ISO 228 - FEMALE G ISO 228 - FEMALE G ISO 228

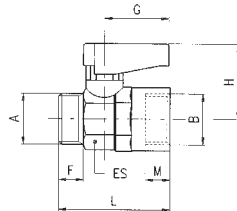


| A | B | DN | ES | F | M | L | G | H | Conf. Pack. |
|-----|-------|-----|-------|----|----|----|----|------|-------------|
| 1/8 | - 1/8 | 5.5 | 14-15 | 7 | 7 | 35 | 19 | 21 | 25 |
| 1/4 | - 1/4 | 5.5 | 14-15 | 8 | 8 | 37 | 19 | 21 | 25 |
| 3/8 | - 3/8 | 8 | 18-19 | 9 | 9 | 42 | 19 | 22 | 10 |
| 1/2 | - 1/2 | 10 | 22-23 | 10 | 10 | 49 | 26 | 30.5 | 10 |
| 3/4 | - 3/4 | 14 | 28-30 | 12 | 12 | 58 | 50 | 33 | 5 |



6410

MASCHIO CILINDRICO GA ISO 228 - FEMMINA G ISO 228 - PARALLEL MALE GA ISO 228 - FEMALE G ISO 228

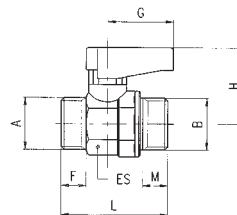


| A | B | DN | ES | F | M | L | G | H | Conf. Pack. |
|-----|-------|-----|-------|----|----|----|----|------|-------------|
| 1/8 | - 1/8 | 5.5 | 14-15 | 7 | 7 | 34 | 19 | 21 | 25 |
| 1/4 | - 1/8 | 5.5 | 14-15 | 8 | 7 | 35 | 19 | 21 | 25 |
| 1/4 | - 1/4 | 5.5 | 14-15 | 8 | 8 | 35 | 19 | 21 | 25 |
| 3/8 | - 3/8 | 8 | 18-19 | 9 | 9 | 39 | 19 | 22 | 10 |
| 1/2 | - 1/2 | 10 | 22-23 | 10 | 10 | 45 | 26 | 30.5 | 10 |
| 3/4 | - 3/4 | 14 | 28-30 | 12 | 12 | 52 | 50 | 33 | 5 |



6420

MASCHIO CILINDRICO GA ISO 228 - MASCHIO CILINDRICO GA ISO 228 - PARALLEL MALE GA ISO 228 - PARALLEL MALE GA ISO 228

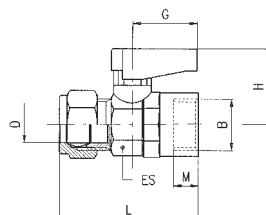


| A | B | DN | ES | F | M | L | G | H | Conf. Pack. |
|-----|-------|-----|-------|----|----|----|----|------|-------------|
| 1/8 | - 1/8 | 5.5 | 14-15 | 7 | 7 | 32 | 19 | 21 | 25 |
| 1/8 | - 1/4 | 5.5 | 14-15 | 7 | 8 | 32 | 19 | 21 | 25 |
| 1/4 | - 1/4 | 5.5 | 14-15 | 8 | 8 | 33 | 19 | 21 | 25 |
| 3/8 | - 1/4 | 5.5 | 14-15 | 9 | 8 | 33 | 19 | 21 | 25 |
| 3/8 | - 3/8 | 8 | 18-19 | 9 | 9 | 37 | 19 | 22 | 10 |
| 1/2 | - 3/8 | 8 | 18-19 | 10 | 9 | 37 | 19 | 22 | 10 |
| 1/2 | - 1/2 | 10 | 22-23 | 10 | 10 | 42 | 26 | 30.5 | 10 |
| 3/4 | - 1/2 | 10 | 22-23 | 12 | 10 | 42 | 50 | 30.5 | 10 |
| 3/4 | - 3/4 | 14 | 28-30 | 12 | 12 | 49 | 50 | 33 | 5 |



6430

TUBO - FEMMINA G ISO 228 - TUBE - FEMALE G ISO 228

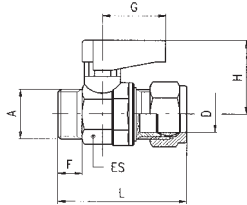


| D | B | DN | ES | M | L | G | H | Conf. Pack. |
|----|-------|-----|-------|----|------|----|------|-------------|
| 6 | - 1/8 | 5.5 | 14-15 | 7 | 41 | 19 | 21 | 25 |
| 8 | - 1/8 | 5.5 | 14-15 | 7 | 43 | 19 | 21 | 25 |
| 8 | - 1/4 | 5.5 | 14-15 | 8 | 43 | 19 | 21 | 25 |
| 10 | - 3/8 | 8 | 18-19 | 9 | 48 | 19 | 22 | 10 |
| 12 | - 3/8 | 8 | 18-19 | 9 | 49 | 19 | 22 | 10 |
| 14 | - 1/2 | 10 | 22-23 | 10 | 55.5 | 26 | 30.5 | 10 |
| 15 | - 1/2 | 10 | 22-23 | 10 | 55.5 | 26 | 30.5 | 10 |
| 16 | - 3/4 | 14 | 28-30 | 12 | 63.5 | 50 | 33 | 5 |
| 18 | - 3/4 | 14 | 28-30 | 12 | 63.5 | 50 | 33 | 5 |



6440

MASCHIO CILINDRICO GA ISO 228 - TUBO - PARALLEL MALE GA ISO 228 - TUBE



| A | D | DN | ES | F | L | G | H | Conf. Pack. |
|-----|------|-----|-------|----|------|----|------|-------------|
| 1/8 | - 6 | 5.5 | 14-15 | 7 | 39 | 19 | 21 | 25 |
| 1/8 | - 8 | 5.5 | 14-15 | 7 | 40 | 19 | 21 | 25 |
| 1/4 | - 6 | 5.5 | 14-15 | 8 | 40 | 19 | 21 | 25 |
| 1/4 | - 8 | 5.5 | 14-15 | 8 | 41 | 19 | 21 | 25 |
| 1/4 | - 10 | 5.5 | 14-15 | 8 | 44 | 19 | 21 | 25 |
| 3/8 | - 8 | 5.5 | 14-15 | 9 | 43 | 19 | 21 | 25 |
| 3/8 | - 10 | 8 | 18-19 | 9 | 46 | 19 | 22 | 10 |
| 3/8 | - 12 | 8 | 18-19 | 9 | 47 | 19 | 22 | 10 |
| 3/8 | - 14 | 8 | 18-19 | 9 | 50.5 | 19 | 22 | 10 |
| 3/8 | - 15 | 8 | 18-19 | 9 | 50.5 | 19 | 22 | 10 |
| 1/2 | - 10 | 8 | 18-19 | 10 | 49 | 19 | 22 | 10 |
| 1/2 | - 12 | 8 | 18-19 | 10 | 50 | 19 | 22 | 10 |
| 1/2 | - 14 | 10 | 22-23 | 10 | 52.5 | 26 | 30.5 | 10 |
| 1/2 | - 15 | 10 | 22-23 | 10 | 52.5 | 26 | 30.5 | 10 |
| 3/4 | - 14 | 10 | 22-23 | 12 | 56.5 | 26 | 30.5 | 10 |
| 3/4 | - 15 | 10 | 22-23 | 12 | 56.5 | 26 | 30.5 | 10 |
| 3/4 | - 16 | 14 | 28-30 | 12 | 60.5 | 50 | 33 | 5 |
| 3/4 | - 18 | 14 | 28-30 | 12 | 60.5 | 50 | 33 | 5 |

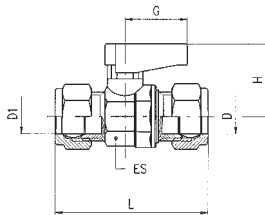
• Nelle misure 1/4-8, 1/4-10, 3/8-14, 3/8-15 il dado, il bicono e il filetto A sono all'opposto della figura.

• In the sizes 1/4-8, 1/4-10, 3/8-14, 3/8-15 the nut, the double cone and the thread A are at the opposite side of the picture.



6450

TUBO - TUBO - TUBE - TUBE

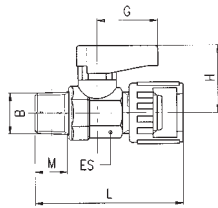


| D1 | D | DN | ES | L | G | H | Conf. Pack. |
|----|------|-----|-------|------|----|------|-------------|
| 6 | - 6 | 5.5 | 14-15 | 46 | 19 | 21 | 25 |
| 6 | - 8 | 5.5 | 14-15 | 48 | 19 | 21 | 25 |
| 8 | - 8 | 5.5 | 14-15 | 48 | 19 | 21 | 25 |
| 10 | - 8 | 5.5 | 14-15 | 51 | 19 | 21 | 25 |
| 10 | - 10 | 8 | 18-19 | 55 | 19 | 22 | 10 |
| 10 | - 12 | 8 | 18-19 | 56 | 19 | 22 | 10 |
| 12 | - 12 | 8 | 18-19 | 57 | 19 | 22 | 10 |
| 14 | - 10 | 8 | 18-19 | 59.5 | 19 | 22 | 10 |
| 14 | - 12 | 8 | 18-19 | 60.5 | 19 | 22 | 10 |
| 15 | - 10 | 8 | 18-19 | 59.5 | 19 | 22 | 10 |
| 15 | - 12 | 8 | 18-19 | 60.5 | 19 | 22 | 10 |
| 14 | - 14 | 10 | 22-23 | 63 | 26 | 30.5 | 10 |
| 15 | - 14 | 10 | 22-23 | 63 | 26 | 30.5 | 10 |
| 15 | - 15 | 10 | 22-23 | 63 | 26 | 30.5 | 10 |
| 16 | - 14 | 10 | 22-23 | 68 | 26 | 30.5 | 10 |
| 16 | - 15 | 10 | 22-23 | 68 | 26 | 30.5 | 10 |
| 18 | - 14 | 10 | 22-23 | 68 | 26 | 30.5 | 10 |
| 18 | - 15 | 10 | 22-23 | 68 | 26 | 30.5 | 10 |
| 18 | - 16 | 14 | 28-30 | 71 | 50 | 33 | 5 |
| 18 | - 18 | 14 | 28-30 | 71 | 50 | 33 | 5 |



6460

DADO CAPETTATO - MASCHIO CONICO R ISO 7 - MILLED NUT - TAPER MALE R ISO 7



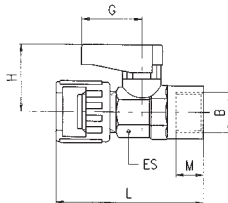
| B | DN | ES | M | L | G | H | Conf. Pack. |
|-----|-----|-------|------|------|----|----|-------------|
| 1/8 | 5.5 | 14-15 | 7.4 | 44 | 19 | 21 | 10 |
| 1/4 | 5.5 | 14-15 | 11 | 49.5 | 19 | 21 | 10 |
| 3/8 | 8 | 18-19 | 11.4 | 50 | 19 | 21 | 10 |



NO GAS

6470

DADO CAPETTATO - FEMMINA G ISO 228 - MILLED NUT - FEMALE G ISO 228



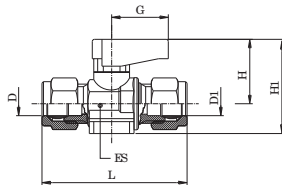
| B | DN | ES | M | L | G | H | Conf. Pack. |
|-----|-----|-------|---|----|----|----|-------------|
| 1/8 | 5.5 | 14-15 | 7 | 46 | 19 | 21 | 10 |
| 1/4 | 5.5 | 14-15 | 8 | 46 | 19 | 21 | 10 |



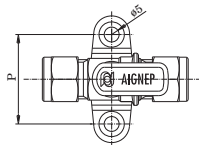
NO GAS

6500

VALVOLA CON PIEDINI D'ANCORAGGIO TUBO-TUBO - FOOT MOUNTED BALL VALVE TUBE-TUBE

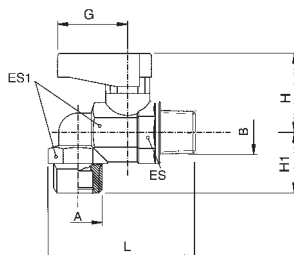


| D | D1 | DN | ES | L | H | H1 | G | P | Conf. Pack. | |
|---|----|----|-----|-------|----|----|----|----|-------------|----|
| 8 | - | 8 | 5.5 | 14-15 | 50 | 21 | 32 | 19 | 30 | 10 |



6540

VALVOLA A L MASCHIO CILINDRICO GA ISO 228-MASCHIO CONICO R ISO 7 - ELBOW VALVE PARALLEL MALE GA ISO 228-TAPER MALE R ISO 7

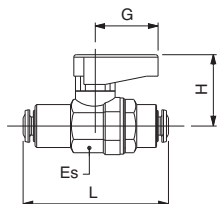


| A | B | DN | ES | ES1 | L | H | H1 | G | Conf. Pack. | |
|-----|---|-----|-----|-------|----|----|----|----|-------------|----|
| 1/4 | - | 1/4 | 5.5 | 14-15 | 17 | 48 | 21 | 17 | 19 | 10 |



6560

VALVOLA CON ATTACCHI TUBO AUTOMATICI - VALVE WITH PUSH-IN CONNECTIONS

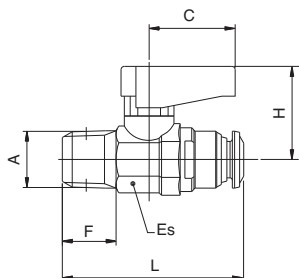


| Tubo Tube | Tubo Tube | DN | ES | L | G | H | Conf. Pack. | |
|-----------|-----------|----|-----|-------|------|----|-------------|----|
| 4 | - | 4 | 3 | 14-15 | 44 | 19 | 21 | 10 |
| 6 | - | 6 | 5 | 14-15 | 48 | 19 | 21 | 10 |
| 8 | - | 8 | 5.5 | 14-15 | 48 | 19 | 21 | 10 |
| 10 | - | 10 | 8 | 18-19 | 58.5 | 19 | 22 | 10 |
| 12 | - | 12 | 10 | 22-23 | 66 | 26 | 30.5 | 10 |

NO GAS

6570

VALVOLA MASCHIO CONICO R ISO 7 - ATTACCO TUBO AUTOMATICO - TAPER MALE R ISO 7- PUSH-FIT CONNECTIONS

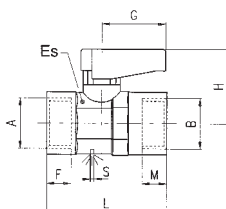


| A | Tubo Tube | F | Es | L | C | H | Conf. Pack. | |
|-----|-----------|---|------|-------|------|----|-------------|----|
| 1/8 | - | 4 | 8.5 | 14-15 | 35 | 19 | 21 | 10 |
| 1/8 | - | 6 | 8.5 | 14-15 | 40 | 19 | 21 | 10 |
| 1/8 | - | 8 | 8.5 | 14-15 | 41.5 | 19 | 21 | 10 |
| 1/4 | - | 6 | 12.5 | 14-15 | 38.5 | 19 | 21 | 10 |
| 1/4 | - | 8 | 12.5 | 14-15 | 45.5 | 19 | 22 | 10 |

NO GAS

6600

VALVOLA CON FORO DI SFIATO FEMMINA G ISO 228 - VALVE EXHAUST HOLE FEMALE G ISO 228 - FEMALE G ISO 228

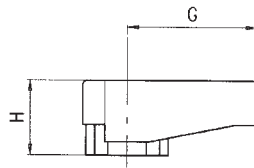


| A | B | DN | ES | F | M | L | G | H | S | Conf. Pack. | |
|-----|---|-----|-----|-------|---|---|----|----|----|-------------|----|
| 1/8 | - | 1/8 | 5.5 | 14-15 | 7 | 7 | 35 | 19 | 21 | 2.5 | 10 |
| 1/4 | - | 1/4 | 5.5 | 14-15 | 8 | 8 | 37 | 19 | 21 | 2.5 | 10 |
| 3/8 | - | 3/8 | 8 | 18-19 | 9 | 9 | 42 | 19 | 22 | 3 | 10 |

NO GAS

6900

MANIGLIA - HANDLE



| Modello Type | G | H | Conf. Pack. |
|-----------------|----|----|----------------|
| A | 19 | 11 | 25 |
| B | 26 | 15 | 25 |

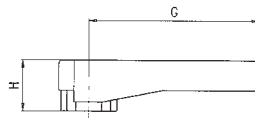
A = Per valvole da 1/8, 1/4, 3/8.
A = For valves of 1/8, 1/4, 3/8.

B = Per valvole da 1/2, 3/4.
B = For valves of 1/2, 3/4.



6910

MANIGLIA LUNGA - LONG HANDLE



| Modello Type | G | H | Conf. Pack. |
|-----------------|----|----|----------------|
| A | 35 | 11 | 25 |
| B | 50 | 15 | 25 |

A = Per valvole da 1/8, 1/4, 3/8.
A = For valves of 1/8, 1/4, 3/8.

B = Per valvole da 1/2, 3/4.
B = For valves of 1/2, 3/4.



Prolunga albero di comando / Spindle Extension

Tutti i modelli di valvola a sfera di questa serie possono essere forniti con asta di manovra prolungata (vedi figura). Per l'ordinazione vedi le istruzioni nella pagina "COME ORDINARE" posta all'inizio della serie.

All the valves "GHILUX" can be supplied with a spindle extension (see the picture). To order use the same instructions mentioned in the previous page "HOW TO ORDER".



6915

PROLUNGA ALBERO DI COMANDO (CON MANIGLIA LUNGA, VITE)
SPINDLE EXTENSION (WITH LONG HANDLE, SCREW)



| Modello Type | Misura valvola Valve size | L | Conf. Pack. |
|-----------------|------------------------------|----|----------------|
| A | 1/8 | 58 | 50 |
| | 1/4 | 58 | |
| | 3/8 | 59 | |
| B | 1/2 | 68 | 25 |
| | 3/4 | 70 | |



6920

PIASTRINA COLORATA
COLOURED PLATE



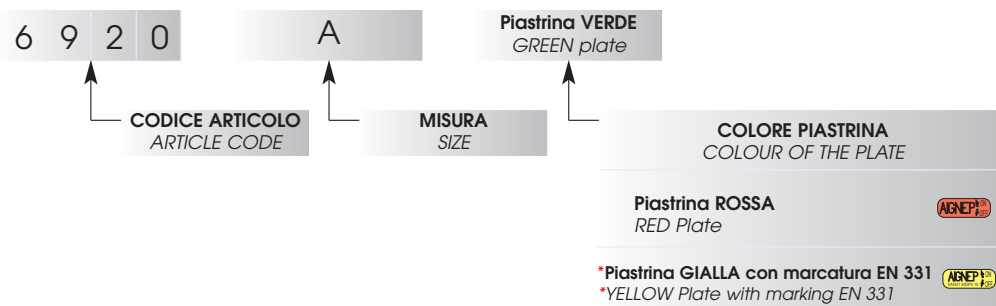
| Modello Type | Conf. Pack. |
|-----------------|----------------|
| A | 100 |
| B | 100 |

A = Per valvole da 1/8, 1/4, 3/8.
 A = For valves of 1/8, 1/4, 3/8.

B = Per valvole da 1/2, 3/4.
 B = For valves of 1/2, 3/4.



ESEMPIO D'ORDINE - EXAMPLE OF ORDER



Su richiesta / if required

Piastrina BLU
 BLUE Plate



Piastrina VERDE
 GREEN Plate



Piastrina BIANCA
 WHITE Plate



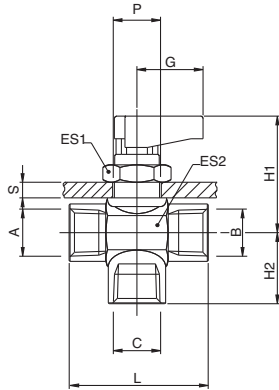
*Per l'utilizzo con Gas
 *For use with gas

6700

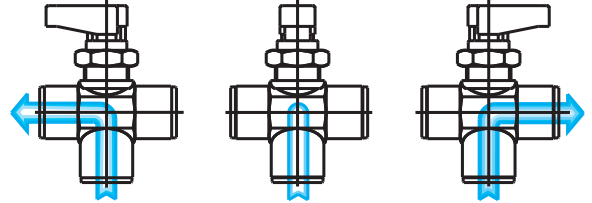
VALVOLA A TRE VIE FEMMINA G ISO 228 - 3 WAYS FEMALE G ISO 228



NO GAS



| A | B | C | (DN) | ES1 | ES2 | L | G | H1 | H2 | SMax | P | Conf. Pack. |
|-----|-----|-----|------|-----|-----|----|----|------|------|------|------|-------------|
| 1/8 | 1/8 | 1/8 | 5 | 17 | 17 | 35 | 19 | 33.5 | 15.5 | 4.5 | 14.5 | 25 |
| 1/4 | 1/4 | 1/4 | 5 | 17 | 17 | 37 | 19 | 33.5 | 17.5 | 4.5 | 14.5 | 25 |
| 3/8 | 3/8 | 3/8 | 7 | 17 | 21 | 42 | 19 | 35 | 19.5 | 4.5 | 14.5 | 10 |

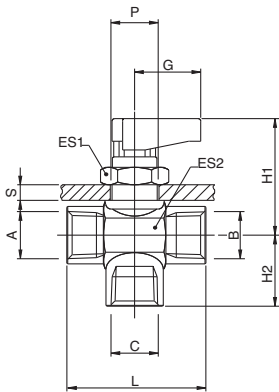


6710

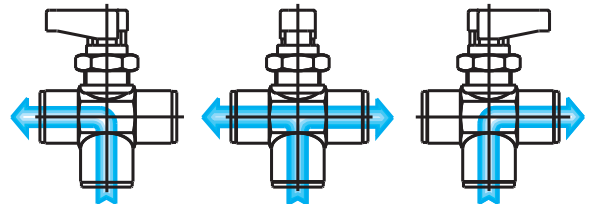
VALVOLA A TRE VIE FEMMINA G ISO 228 - 3 WAYS FEMALE G ISO 228



NO GAS



| A | B | C | (DN) | ES1 | ES2 | L | G | H1 | H2 | SMax | P | Conf. Pack. |
|-----|-----|-----|------|-----|-----|----|----|------|------|------|------|-------------|
| 1/8 | 1/8 | 1/8 | 5 | 17 | 17 | 35 | 19 | 33.5 | 15.5 | 4.5 | 14.5 | 25 |
| 1/4 | 1/4 | 1/4 | 5 | 17 | 17 | 37 | 19 | 33.5 | 17.5 | 4.5 | 14.5 | 25 |
| 3/8 | 3/8 | 3/8 | 7 | 17 | 21 | 42 | 19 | 35 | 19.5 | 4.5 | 14.5 | 10 |

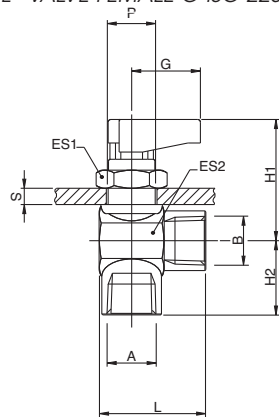


6720

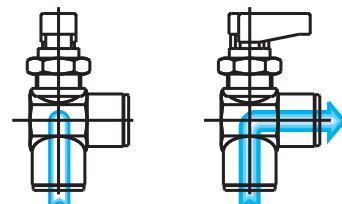
VALVOLA A "L" FEMMINA G ISO 228 - "L" VALVE FEMALE G ISO 228



NO GAS

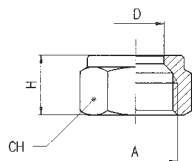


| A | B | (DN) | ES1 | ES2 | L | G | H1 | H2 | SMax | P | Conf. Pack. |
|-----|-----|------|-----|-----|------|----|------|------|------|------|-------------|
| 1/8 | 1/8 | 5 | 17 | 17 | 28.5 | 19 | 33.5 | 15.5 | 4.5 | 14.5 | 25 |
| 1/4 | 1/4 | 5 | 17 | 17 | 28.5 | 19 | 33.5 | 17.5 | 4.5 | 14.5 | 25 |
| 3/8 | 3/8 | 7 | 17 | 21 | 31 | 19 | 35 | 19.5 | 4.5 | 14.5 | 10 |



6680

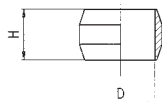
DADO - NUT



| D | A | H | CH | Conf. Pack. |
|----|-------|----|----|-------------|
| 6 | - 1/8 | 11 | 12 | 100 |
| 8 | - 1/4 | 12 | 15 | 100 |
| 10 | - 3/8 | 13 | 19 | 100 |
| 12 | - 3/8 | 14 | 19 | 100 |
| 14 | - 1/2 | 15 | 24 | 100 |
| 15 | - 1/2 | 15 | 24 | 100 |
| 16 | - 3/4 | 17 | 30 | 100 |
| 18 | - 3/4 | 17 | 30 | 100 |

10740

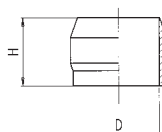
OGIVA OTTONE - BRASS OLIVE



| D | H | Conf. Pack. |
|----|-----|-------------|
| 6 | 6.5 | 50 |
| 8 | 6.5 | 50 |
| 10 | 7.5 | 50 |
| 12 | 8 | 50 |
| 15 | 9 | 25 |
| 18 | 10 | 25 |

10741

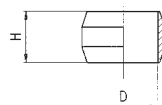
OGIVA OTTONE - BRASS OLIVE



| D | H | Conf. Pack. |
|----|------|-------------|
| 14 | 12 | 50 |
| 16 | 13.5 | 50 |

10760

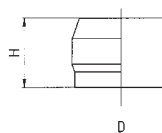
OGIVA PTFE - PTFE OLIVE



| D | H | Conf. Pack. |
|----|-----|-------------|
| 6 | 6.5 | 50 |
| 8 | 6.5 | 50 |
| 10 | 7.5 | 50 |
| 12 | 8 | 50 |
| 15 | 9 | 50 |
| 18 | 10 | 50 |

10761

OGIVA PTFE - PTFE OLIVE



| D | H | Conf. Pack. |
|----|------|-------------|
| 14 | 12 | 50 |
| 16 | 13.5 | 50 |